

ATTACHMENT A

ATTACHMENT A

ARCHITECTURAL PLANS

1 HUTCHINSON WALK, ZETLAND

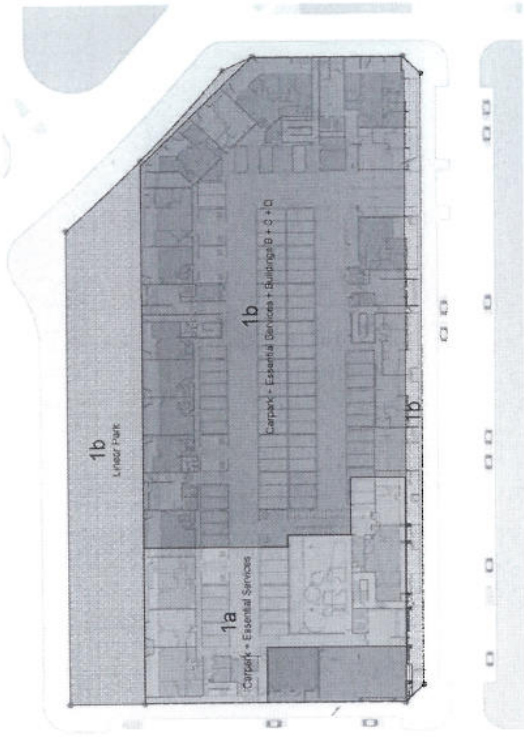
ATTACHMENT A



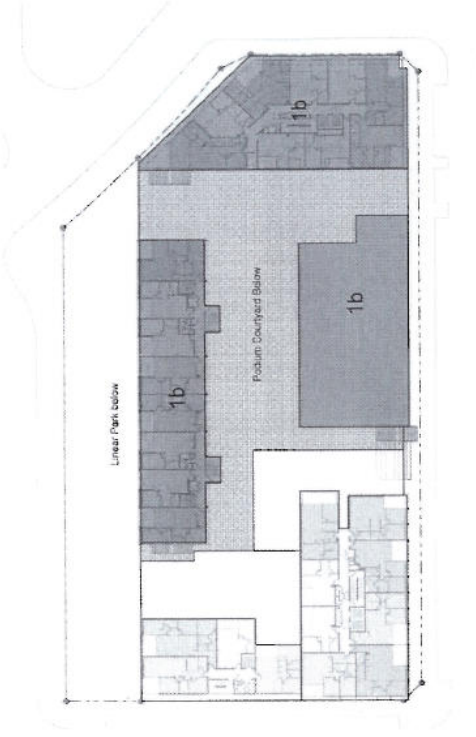
LOT 305 + Lot 306, Victoria Park
 1 HITCHINSON WALK, ZEPHYRUS
 Location Plan
 Drawings

Legend
 LOT 305
 LOT 306
 200mm BOUNDARY LINE
 150mm BOUNDARY LINE
 100mm BOUNDARY LINE
 50mm BOUNDARY LINE
 25mm BOUNDARY LINE
 12.5mm BOUNDARY LINE
 6.25mm BOUNDARY LINE
NOTE
 THIS PLAN IS A PRELIMINARY PLAN AND IS NOT A CONTRACT DOCUMENT. IT IS SUBJECT TO THE FINAL APPROVAL BY THE LOCAL COUNCIL.
 THE DESIGN AND CONSTRUCTION OF THE PROJECT SHALL BE IN ACCORDANCE WITH THE RELEVANT LOCAL COUNCIL REGULATIONS AND STANDARDS.
 THE INFORMATION CONTAINED HEREIN IS FOR INFORMATION ONLY AND IS NOT TO BE USED FOR ANY OTHER PURPOSE.
 TURNER ASSOCIATES

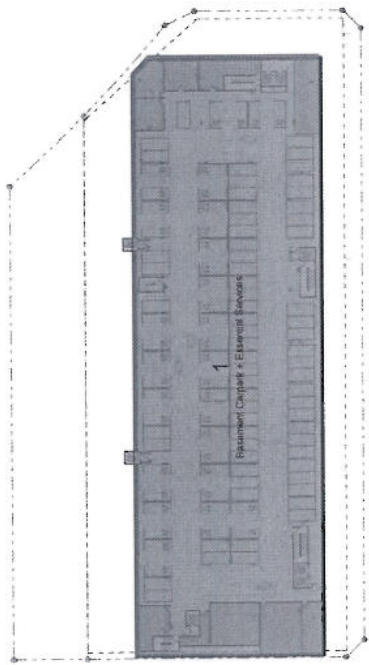
ATTACHMENT A



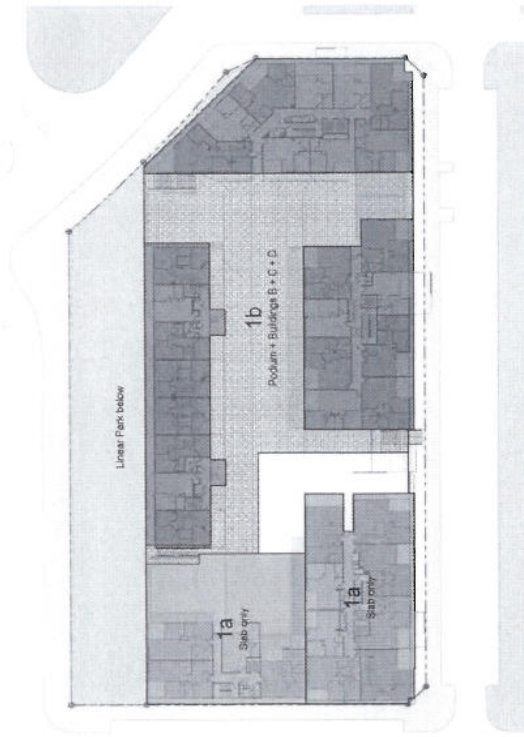
LEVEL 01_STAGE 1



TYPICAL LEVEL (LEVEL 08)_STAGE 1



BASEMENT LEVEL 01 + 02_STAGE 1



LEVEL 02_STAGE 1

Legend

[Hatched Pattern]	Podium + Buildings B + C + D
[Dotted Pattern]	1a - Shop only
[Diagonal Lines]	1b
[Stippled Pattern]	Linear Park below
[Solid Grey]	Linear Park
[White]	Other

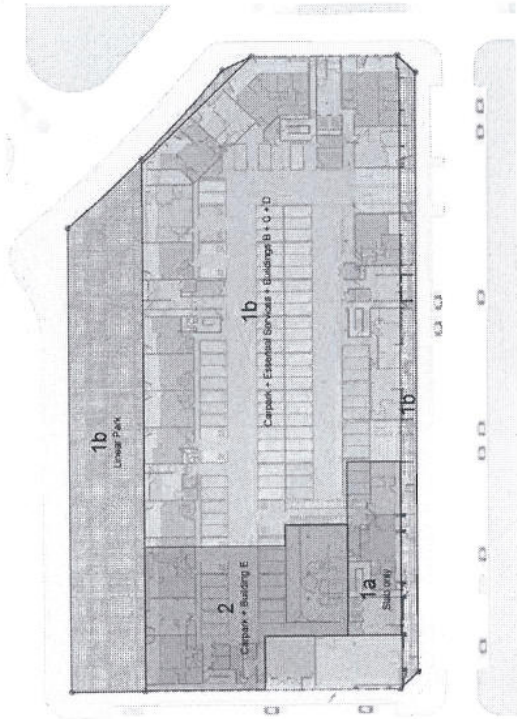
Project: **Merita No 21 Pty Ltd**

11/02/2019
 Lot 305 + Lot 306, Vowles Park
 1 Hildesheim Walk, Zealandia
 11/02/2019
 Stage 1
 Staging Plan Diagrams Stage 1
 Diagrams

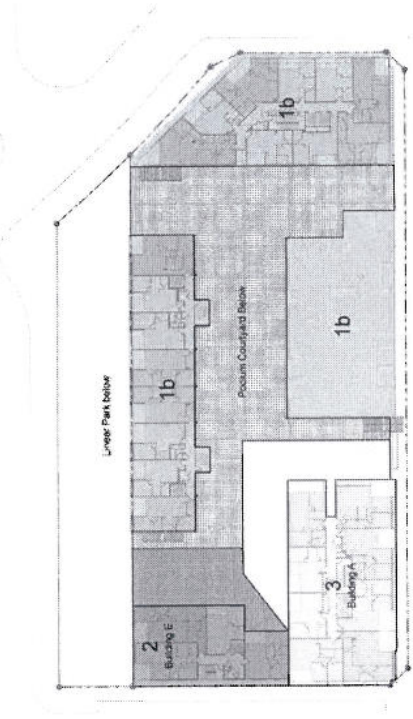
Client: Merita No 21 Pty Ltd	Architect: Turner + Associates
Project: Lot 305 + Lot 306, Vowles Park	Scale: 1:100
Site: 11/02/2019	Drawn: DA/10
Drawn: DA/10	Check: C

TURNER + ASSOCIATES
 11/02/2019
 11/02/2019
 11/02/2019

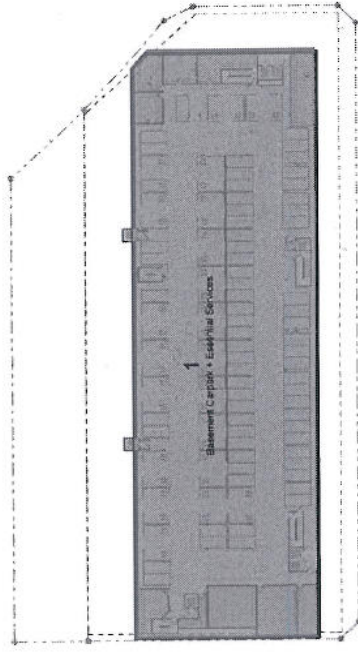
ATTACHMENT A



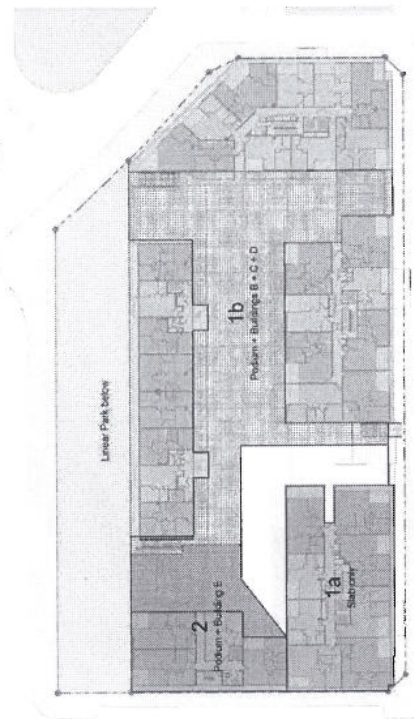
LEVEL 01, STAGE 2



TYPICAL LEVEL (LEVEL 08), STAGE 2



BASEMENT LEVEL 01 + 02, STAGE 2



LEVEL 02, STAGE 2

Area	Color	Symbol
Linear Park	Light Green	Green hatched
Podium	Light Grey	Grey hatched
Subway	Dark Grey	Dark grey hatched
Essential Services	Light Blue	Blue hatched
Other	White	None

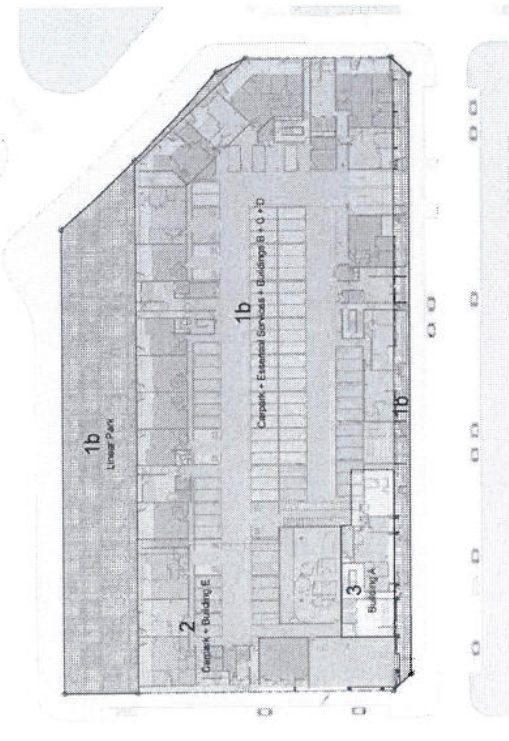
No. 01/2012
 Date 11/08/2012
 Approved By [Signature]
 Prepared By [Signature]
 Scale 1:1000
 Project No. 11019
 Drawing No. DA011
 Date 11/08/2012

TUNER ASSOCIATES

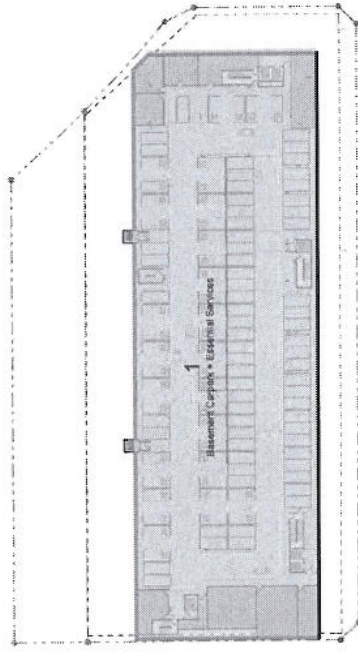
Lot 303 + Lot 304, VICENTE PARK
 11 HATHORN WALK, ZENITH
 Staging Plan Diagrams, Stage 2
 Diagram

Mells No. 21 Pty Ltd
 11 HATHORN WALK, ZENITH
 VIC 3015
 08 9437 1111
 www.tunerassociates.com.au

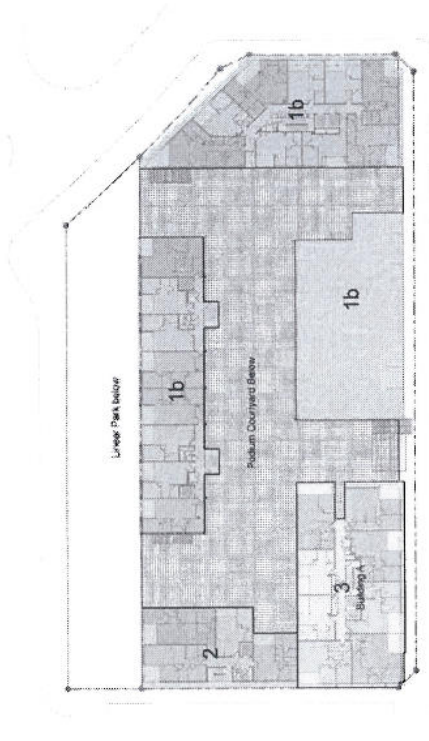
ATTACHMENT A



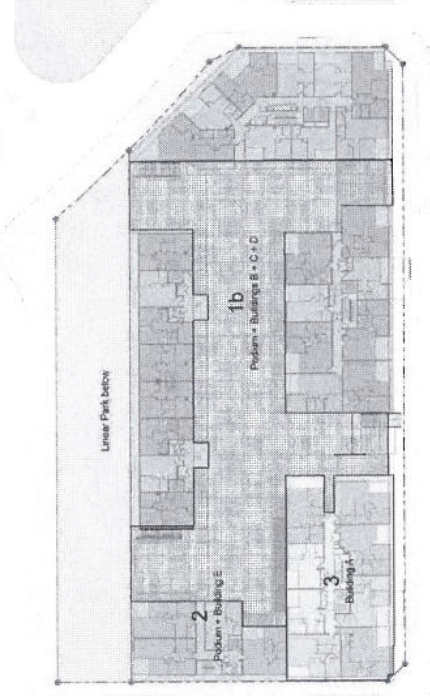
LEVEL 01_STAGE 3



BASEMENT LEVEL 01 + 02_STAGE 3



TYPICAL LEVEL (LEVEL 08)_STAGE 3



LEVEL 02_STAGE 3

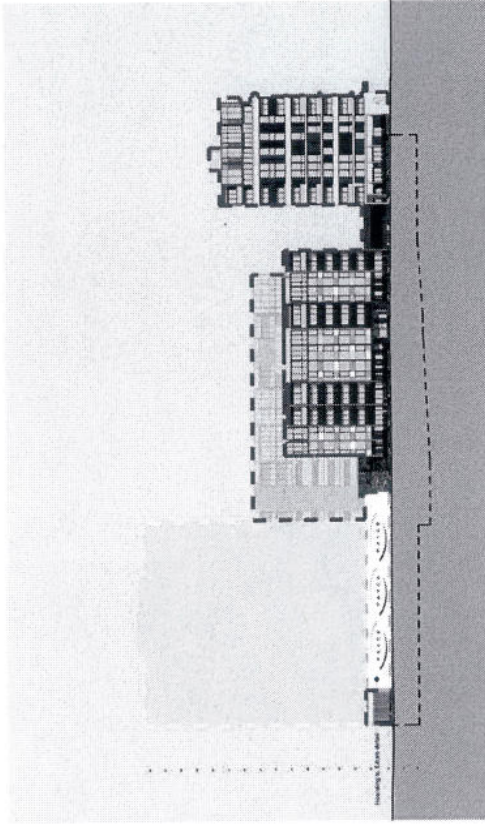
Item	Material	Color	Notes
1	Concrete	Grey	Structural elements
2	Brick	Red	Exterior walls
3	Cladding	White	Podium areas
4	Asphalt	Black	Parking areas
5	Grass	Green	Linear Park

Date: 14/09/2023
 Project: 11018
 Drawing: D012
 Scale: C
 Author: Turner + Associates
 Date: 14/09/2023

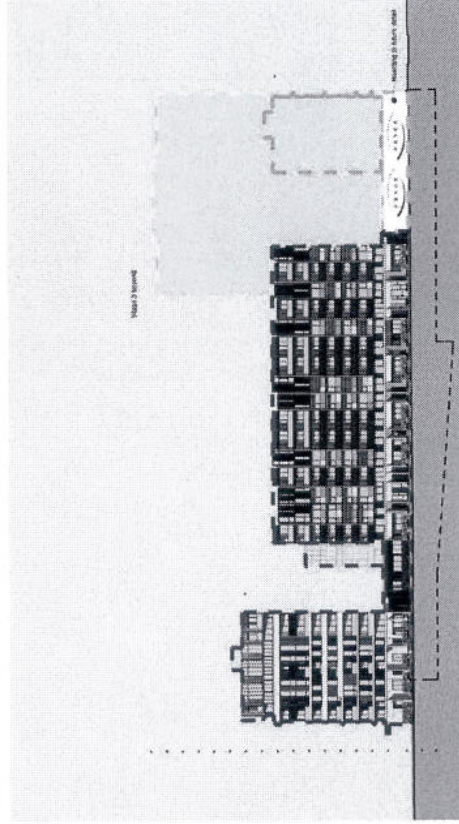
Lot 205 + Lot 206, Victoria Park
 11 Kingsway Park, Zetland
 Staging Plan Diagrams Stage 3
 Diagrams

Meets No. 21 Pty Ltd
 11 Kingsway Park, Zetland
 021 480 0000

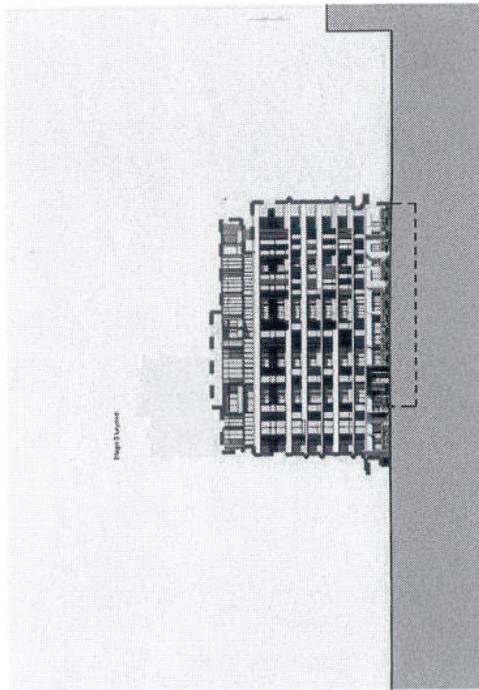
ATTACHMENT A



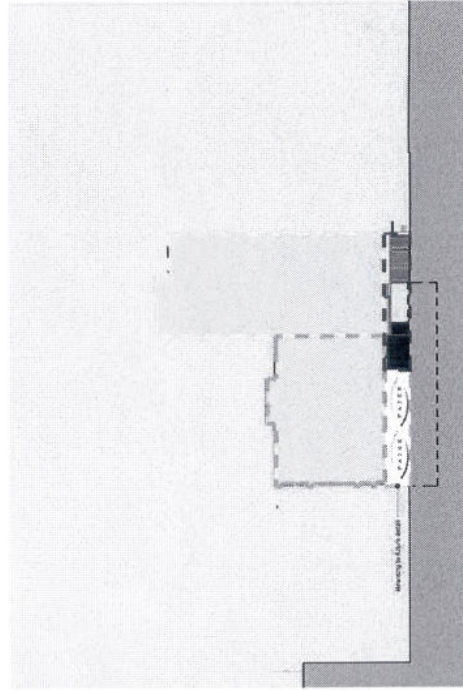
EAST ELEVATION_STAGE 1



WEST ELEVATION_STAGE 1



NORTH ELEVATION_STAGE 1



SOUTH ELEVATION_STAGE 1

Legend
Color:

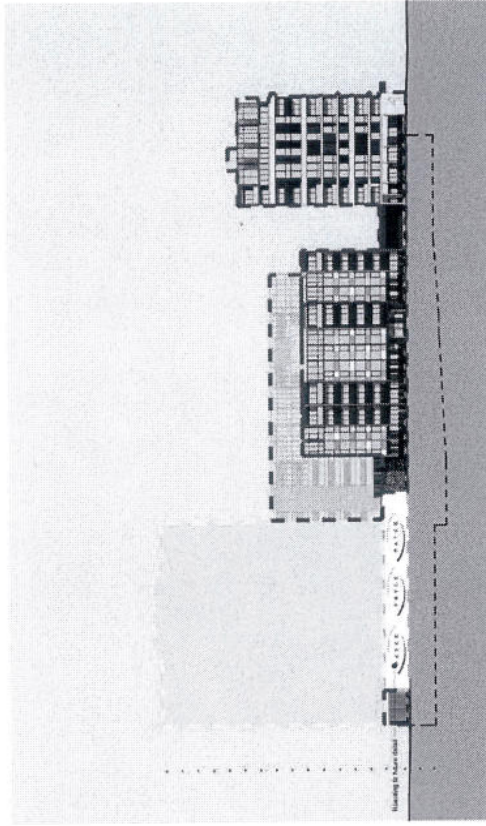
Scale: 1:100
North Arrow:

Hevila No.21 Pty Ltd

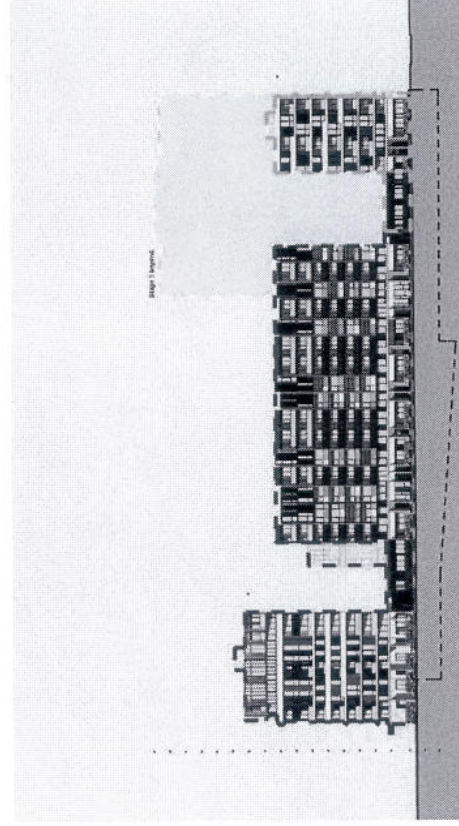
Lot 204 + Lot 205, Victoria Park
1 The Pines Way, Zealandia
Staging Elevation Diagrams S1-1
Diagrams

14/05/2025 10:20:25 AM
Site: 2204-2205, Approved by: Resource Consent
Drawn: M. Dwyer
Checked: M. Dwyer
Date: 14/05/2025
Scale: 1:100
Project: 2204-2205
Client: Hevila No.21 Pty Ltd
Turner & Associates
14/05/2025 10:20:25 AM

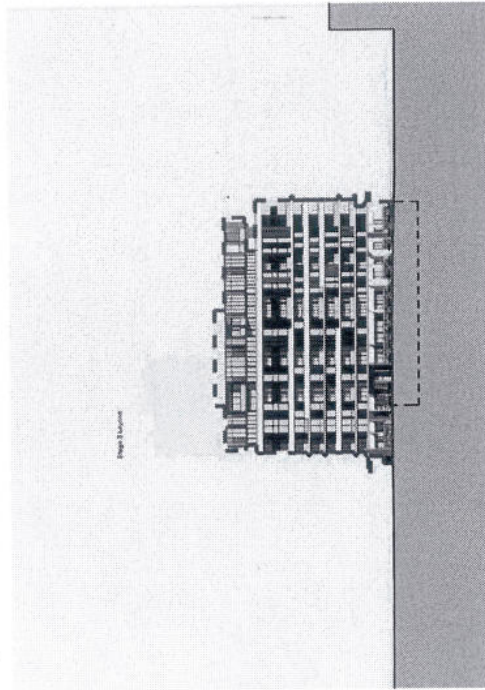
ATTACHMENT A



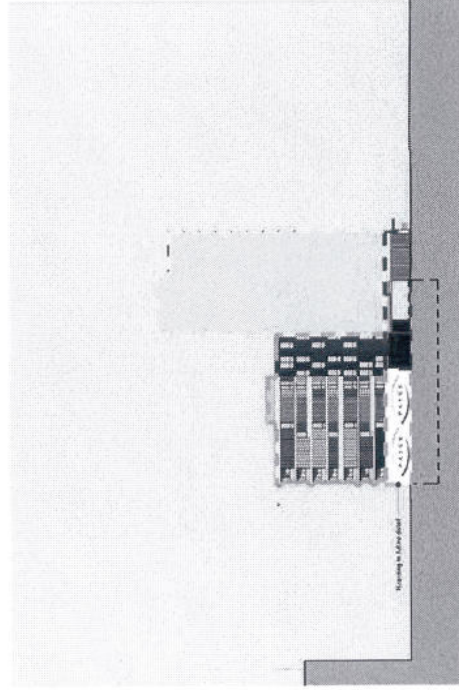
EAST ELEVATION_STAGE 2



WEST ELEVATION_STAGE 2



NORTH ELEVATION_STAGE 2



SOUTH ELEVATION_STAGE 2

Legend

	Proposed
	Existing
	Proposed
	Existing
	Proposed
	Existing

Neolla No. 21 Pty Ltd

100 South Street, Suite 202, Cape Town, South Africa
 Telephone: +27 21 460 1000
 Fax: +27 21 460 1001
 Email: info@neolla.co.za
 Website: www.neolla.co.za

Neolla No. 21 Pty Ltd
 100 South Street, Suite 202, Cape Town, South Africa
 Telephone: +27 21 460 1000
 Fax: +27 21 460 1001
 Email: info@neolla.co.za
 Website: www.neolla.co.za

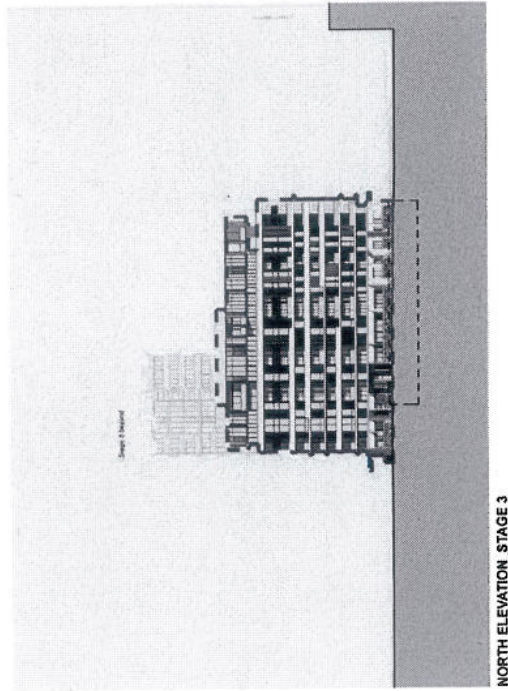
Neolla No. 21 Pty Ltd
 100 South Street, Suite 202, Cape Town, South Africa
 Telephone: +27 21 460 1000
 Fax: +27 21 460 1001
 Email: info@neolla.co.za
 Website: www.neolla.co.za

Neolla No. 21 Pty Ltd
 100 South Street, Suite 202, Cape Town, South Africa
 Telephone: +27 21 460 1000
 Fax: +27 21 460 1001
 Email: info@neolla.co.za
 Website: www.neolla.co.za

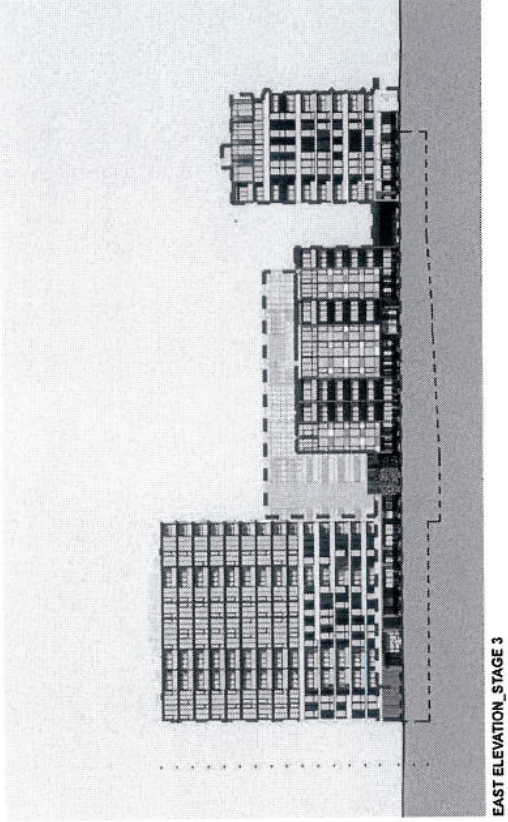
Site: 14/2/2017
 Date: 01/12/2017
 Approved By: R. Van der Merwe
 No. of Pages: 11/19
 Version: 01/01
 Project: 11019
 Title: 11019
 Author: D. J. van der Merwe
 Date: 01/12/2017

TURNER + ASSOCIATES
 100 South Street, Suite 202, Cape Town, South Africa
 Telephone: +27 21 460 1000
 Fax: +27 21 460 1001
 Email: info@turner.co.za
 Website: www.turner.co.za

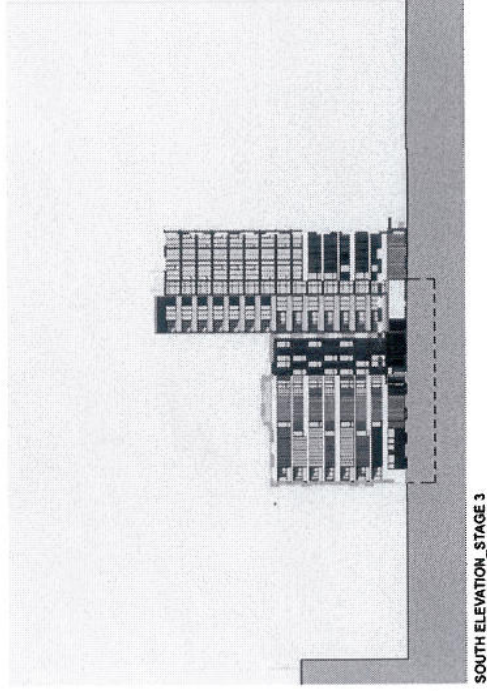
ATTACHMENT A



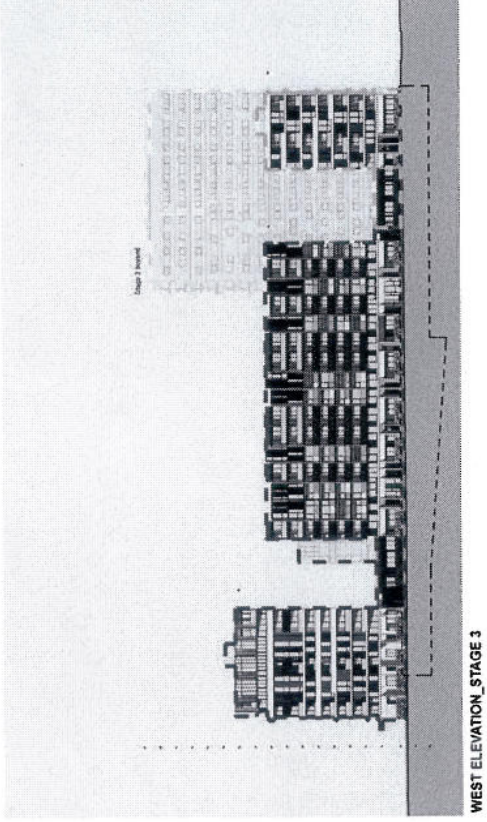
NORTH ELEVATION_STAGE 3



EAST ELEVATION_STAGE 3



SOUTH ELEVATION_STAGE 3



WEST ELEVATION_STAGE 3

Legend



Horilla No. 21 Pty Ltd

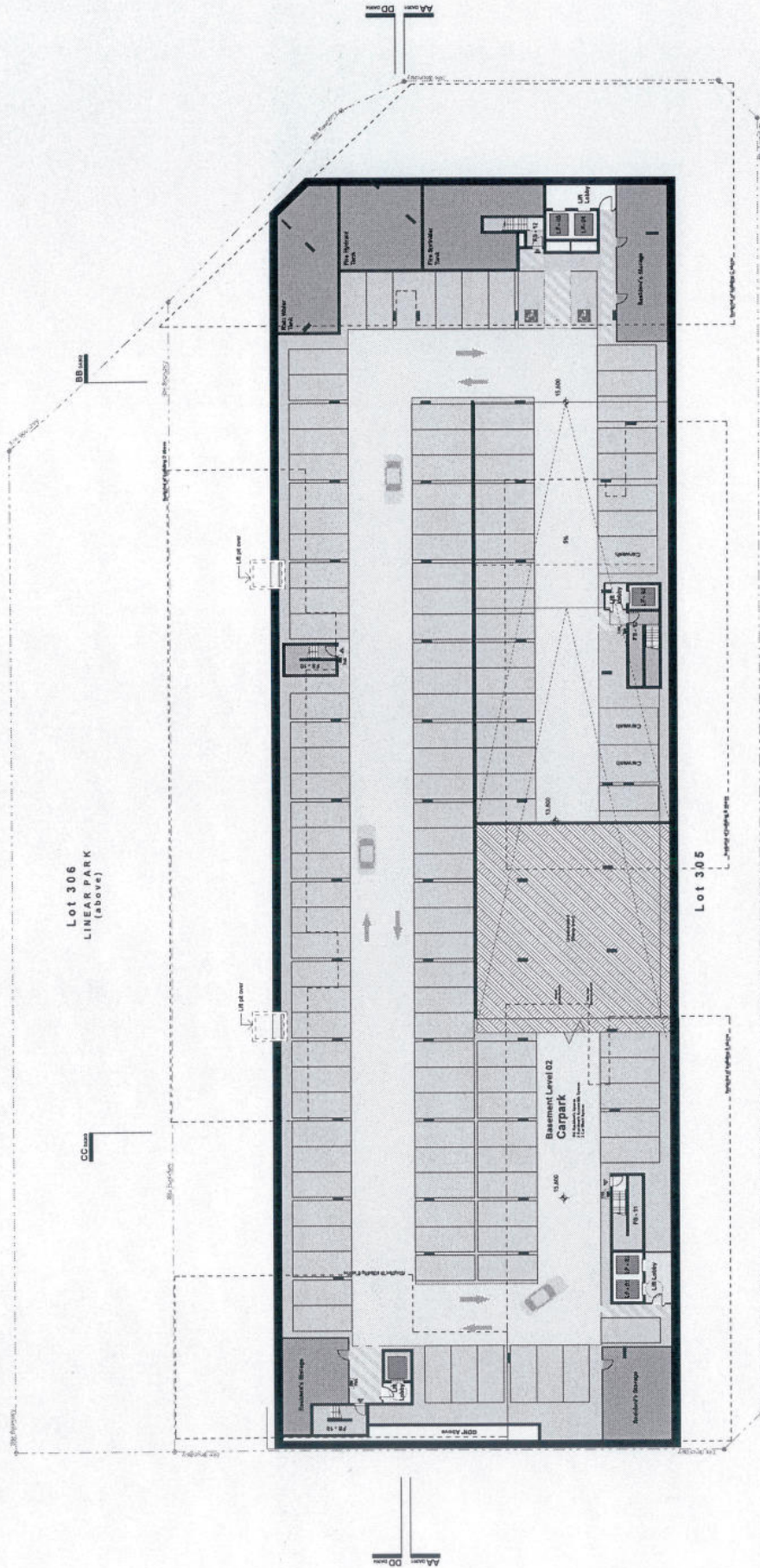
Lot 204 + Lot 205, Victoria Park
Hastings Park, Zealand

Stage 3 Revised

14/03/2015 MTD
1001 1001 1001 1001 1001
DA015

TUNNET ASSOCIATES
147, 2001 1001 1001 1001 1001

ATTACHMENT A



Legend

- 100 Concrete
- 101 Brick
- 102 Masonry
- 103 Plaster
- 104 Gypsum Board
- 105 Glass
- 106 Metal Decking
- 107 Timber Decking
- 108 Asphalt
- 109 Gravel
- 110 Earth Retention
- 111 Retaining Wall
- 112 Earth Retention
- 113 Earth Retention
- 114 Earth Retention
- 115 Earth Retention
- 116 Earth Retention
- 117 Earth Retention
- 118 Earth Retention
- 119 Earth Retention
- 120 Earth Retention
- 121 Earth Retention
- 122 Earth Retention
- 123 Earth Retention
- 124 Earth Retention
- 125 Earth Retention
- 126 Earth Retention
- 127 Earth Retention
- 128 Earth Retention
- 129 Earth Retention
- 130 Earth Retention
- 131 Earth Retention
- 132 Earth Retention
- 133 Earth Retention
- 134 Earth Retention
- 135 Earth Retention
- 136 Earth Retention
- 137 Earth Retention
- 138 Earth Retention
- 139 Earth Retention
- 140 Earth Retention
- 141 Earth Retention
- 142 Earth Retention
- 143 Earth Retention
- 144 Earth Retention
- 145 Earth Retention
- 146 Earth Retention
- 147 Earth Retention
- 148 Earth Retention
- 149 Earth Retention
- 150 Earth Retention

Materials & Finish Legend

- 100 Concrete
- 101 Brick
- 102 Masonry
- 103 Plaster
- 104 Gypsum Board
- 105 Glass
- 106 Metal Decking
- 107 Timber Decking
- 108 Asphalt
- 109 Gravel
- 110 Earth Retention
- 111 Retaining Wall
- 112 Earth Retention
- 113 Earth Retention
- 114 Earth Retention
- 115 Earth Retention
- 116 Earth Retention
- 117 Earth Retention
- 118 Earth Retention
- 119 Earth Retention
- 120 Earth Retention
- 121 Earth Retention
- 122 Earth Retention
- 123 Earth Retention
- 124 Earth Retention
- 125 Earth Retention
- 126 Earth Retention
- 127 Earth Retention
- 128 Earth Retention
- 129 Earth Retention
- 130 Earth Retention
- 131 Earth Retention
- 132 Earth Retention
- 133 Earth Retention
- 134 Earth Retention
- 135 Earth Retention
- 136 Earth Retention
- 137 Earth Retention
- 138 Earth Retention
- 139 Earth Retention
- 140 Earth Retention
- 141 Earth Retention
- 142 Earth Retention
- 143 Earth Retention
- 144 Earth Retention
- 145 Earth Retention
- 146 Earth Retention
- 147 Earth Retention
- 148 Earth Retention
- 149 Earth Retention
- 150 Earth Retention

Notes

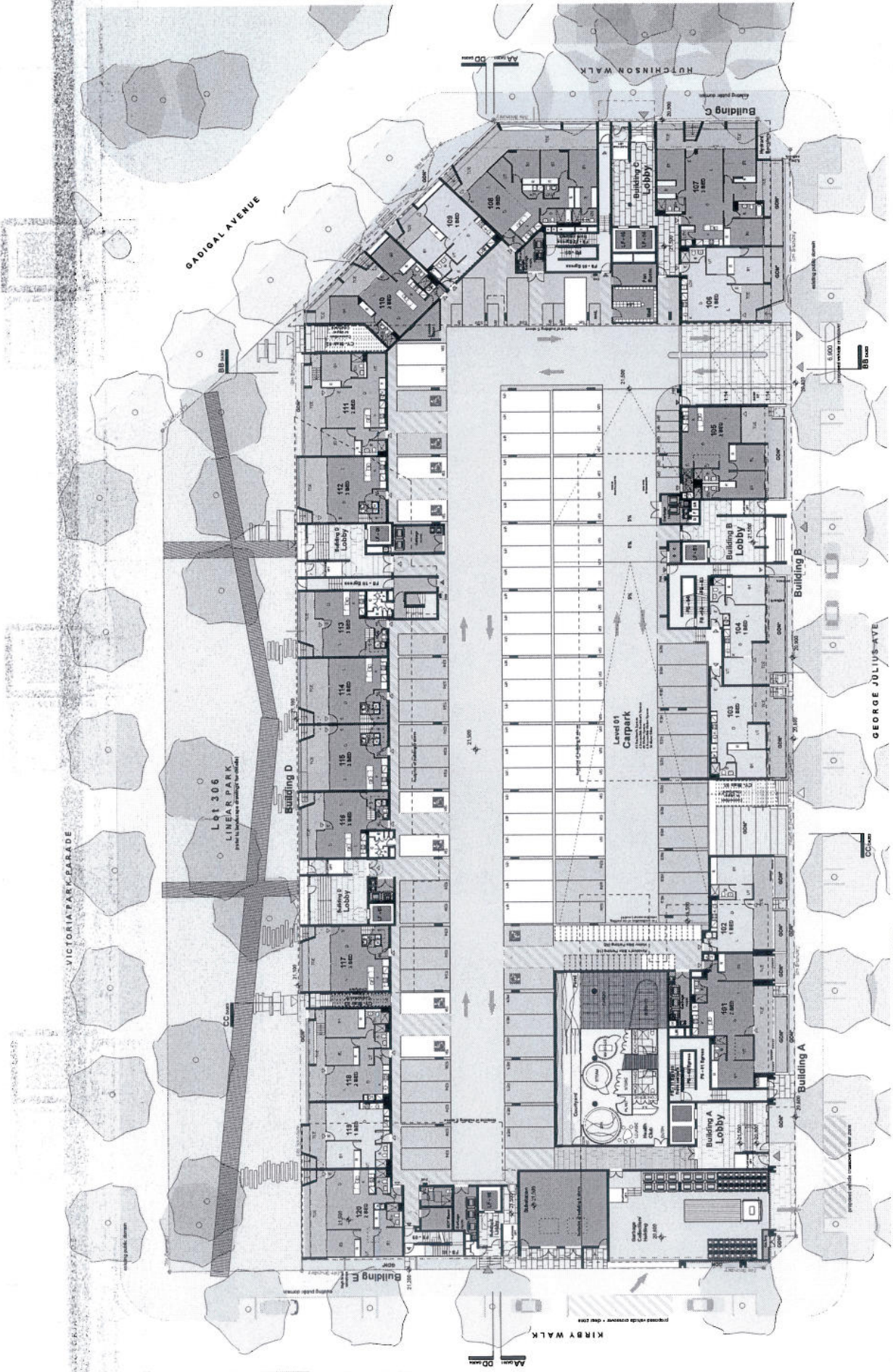
1. All dimensions are in millimeters unless otherwise stated.
2. Refer to the structural drawings for all structural details.
3. All materials and finishes are to be as specified in the legend.
4. All work is to be in accordance with the relevant Australian Standards.
5. All work is to be completed in accordance with the program of works.
6. All work is to be completed in accordance with the contract documents.
7. All work is to be completed in accordance with the relevant Australian Standards.
8. All work is to be completed in accordance with the contract documents.
9. All work is to be completed in accordance with the relevant Australian Standards.
10. All work is to be completed in accordance with the contract documents.

Project Information

Project No: 1019
 Date: 14/3/2012
 Approved By: [Signature]
 Drawn By: [Signature]
 Checked By: [Signature]
 Scale: 1:100
 Title: Lot 305 + Lot 306, Victoria Park
 11 Robinson Walk, Zetland
 Basement Level 02
 Plans

Turner + Associates
 14-15 Green Street, Sydney, NSW 2000
 Tel: +61 2 9888 0000 Fax: +61 2 9888 0044

ATTACHMENT A



Legend

- 100mm Concrete Slab
- 150mm Concrete Slab
- 200mm Concrete Slab
- 250mm Concrete Slab
- 300mm Concrete Slab
- 400mm Concrete Slab
- 500mm Concrete Slab
- 600mm Concrete Slab
- 700mm Concrete Slab
- 800mm Concrete Slab
- 900mm Concrete Slab
- 1000mm Concrete Slab
- 1100mm Concrete Slab
- 1200mm Concrete Slab
- 1300mm Concrete Slab
- 1400mm Concrete Slab
- 1500mm Concrete Slab
- 1600mm Concrete Slab
- 1700mm Concrete Slab
- 1800mm Concrete Slab
- 1900mm Concrete Slab
- 2000mm Concrete Slab
- 2100mm Concrete Slab
- 2200mm Concrete Slab
- 2300mm Concrete Slab
- 2400mm Concrete Slab
- 2500mm Concrete Slab
- 2600mm Concrete Slab
- 2700mm Concrete Slab
- 2800mm Concrete Slab
- 2900mm Concrete Slab
- 3000mm Concrete Slab
- 3100mm Concrete Slab
- 3200mm Concrete Slab
- 3300mm Concrete Slab
- 3400mm Concrete Slab
- 3500mm Concrete Slab
- 3600mm Concrete Slab
- 3700mm Concrete Slab
- 3800mm Concrete Slab
- 3900mm Concrete Slab
- 4000mm Concrete Slab
- 4100mm Concrete Slab
- 4200mm Concrete Slab
- 4300mm Concrete Slab
- 4400mm Concrete Slab
- 4500mm Concrete Slab
- 4600mm Concrete Slab
- 4700mm Concrete Slab
- 4800mm Concrete Slab
- 4900mm Concrete Slab
- 5000mm Concrete Slab
- 5100mm Concrete Slab
- 5200mm Concrete Slab
- 5300mm Concrete Slab
- 5400mm Concrete Slab
- 5500mm Concrete Slab
- 5600mm Concrete Slab
- 5700mm Concrete Slab
- 5800mm Concrete Slab
- 5900mm Concrete Slab
- 6000mm Concrete Slab
- 6100mm Concrete Slab
- 6200mm Concrete Slab
- 6300mm Concrete Slab
- 6400mm Concrete Slab
- 6500mm Concrete Slab
- 6600mm Concrete Slab
- 6700mm Concrete Slab
- 6800mm Concrete Slab
- 6900mm Concrete Slab
- 7000mm Concrete Slab
- 7100mm Concrete Slab
- 7200mm Concrete Slab
- 7300mm Concrete Slab
- 7400mm Concrete Slab
- 7500mm Concrete Slab
- 7600mm Concrete Slab
- 7700mm Concrete Slab
- 7800mm Concrete Slab
- 7900mm Concrete Slab
- 8000mm Concrete Slab
- 8100mm Concrete Slab
- 8200mm Concrete Slab
- 8300mm Concrete Slab
- 8400mm Concrete Slab
- 8500mm Concrete Slab
- 8600mm Concrete Slab
- 8700mm Concrete Slab
- 8800mm Concrete Slab
- 8900mm Concrete Slab
- 9000mm Concrete Slab
- 9100mm Concrete Slab
- 9200mm Concrete Slab
- 9300mm Concrete Slab
- 9400mm Concrete Slab
- 9500mm Concrete Slab
- 9600mm Concrete Slab
- 9700mm Concrete Slab
- 9800mm Concrete Slab
- 9900mm Concrete Slab
- 10000mm Concrete Slab

Materials & Finishes Legend

- 1. Concrete
- 2. Brickwork
- 3. Masonry
- 4. Plaster
- 5. Gypsum Board
- 6. Drywall
- 7. Acoustic Ceiling
- 8. Suspended Ceiling
- 9. Acoustic Tiles
- 10. Carpet
- 11. Hardwood
- 12. Laminate
- 13. Vinyl
- 14. Stone
- 15. Granite
- 16. Marble
- 17. Terrazzo
- 18. Polished Concrete
- 19. Paint
- 20. Wallpaper
- 21. Glass
- 22. Metal
- 23. Stainless Steel
- 24. Aluminum
- 25. Copper
- 26. Bronze
- 27. Gold Leaf
- 28. Silver Leaf
- 29. Titanium
- 30. Carbon Fiber
- 31. Kevlar
- 32. Fiberglass
- 33. Carbon Fiber
- 34. Kevlar
- 35. Fiberglass
- 36. Carbon Fiber
- 37. Kevlar
- 38. Fiberglass
- 39. Carbon Fiber
- 40. Kevlar
- 41. Fiberglass
- 42. Carbon Fiber
- 43. Kevlar
- 44. Fiberglass
- 45. Carbon Fiber
- 46. Kevlar
- 47. Fiberglass
- 48. Carbon Fiber
- 49. Kevlar
- 50. Fiberglass
- 51. Carbon Fiber
- 52. Kevlar
- 53. Fiberglass
- 54. Carbon Fiber
- 55. Kevlar
- 56. Fiberglass
- 57. Carbon Fiber
- 58. Kevlar
- 59. Fiberglass
- 60. Carbon Fiber
- 61. Kevlar
- 62. Fiberglass
- 63. Carbon Fiber
- 64. Kevlar
- 65. Fiberglass
- 66. Carbon Fiber
- 67. Kevlar
- 68. Fiberglass
- 69. Carbon Fiber
- 70. Kevlar
- 71. Fiberglass
- 72. Carbon Fiber
- 73. Kevlar
- 74. Fiberglass
- 75. Carbon Fiber
- 76. Kevlar
- 77. Fiberglass
- 78. Carbon Fiber
- 79. Kevlar
- 80. Fiberglass
- 81. Carbon Fiber
- 82. Kevlar
- 83. Fiberglass
- 84. Carbon Fiber
- 85. Kevlar
- 86. Fiberglass
- 87. Carbon Fiber
- 88. Kevlar
- 89. Fiberglass
- 90. Carbon Fiber
- 91. Kevlar
- 92. Fiberglass
- 93. Carbon Fiber
- 94. Kevlar
- 95. Fiberglass
- 96. Carbon Fiber
- 97. Kevlar
- 98. Fiberglass
- 99. Carbon Fiber
- 100. Kevlar
- 101. Fiberglass
- 102. Carbon Fiber
- 103. Kevlar
- 104. Fiberglass
- 105. Carbon Fiber
- 106. Kevlar
- 107. Fiberglass
- 108. Carbon Fiber
- 109. Kevlar
- 110. Fiberglass
- 111. Carbon Fiber
- 112. Kevlar
- 113. Fiberglass
- 114. Carbon Fiber
- 115. Kevlar
- 116. Fiberglass
- 117. Carbon Fiber
- 118. Kevlar
- 119. Fiberglass
- 120. Carbon Fiber
- 121. Kevlar
- 122. Fiberglass
- 123. Carbon Fiber
- 124. Kevlar
- 125. Fiberglass
- 126. Carbon Fiber
- 127. Kevlar
- 128. Fiberglass
- 129. Carbon Fiber
- 130. Kevlar
- 131. Fiberglass
- 132. Carbon Fiber
- 133. Kevlar
- 134. Fiberglass
- 135. Carbon Fiber
- 136. Kevlar
- 137. Fiberglass
- 138. Carbon Fiber
- 139. Kevlar
- 140. Fiberglass
- 141. Carbon Fiber
- 142. Kevlar
- 143. Fiberglass
- 144. Carbon Fiber
- 145. Kevlar
- 146. Fiberglass
- 147. Carbon Fiber
- 148. Kevlar
- 149. Fiberglass
- 150. Carbon Fiber

Notes

1. All dimensions are in millimeters unless otherwise stated.
2. All work to be in accordance with the relevant standards and specifications.
3. All materials to be of the highest quality and suitable for the intended use.
4. All work to be completed within the specified time frame.
5. All work to be carried out in accordance with the relevant safety regulations.
6. All work to be carried out in accordance with the relevant environmental regulations.
7. All work to be carried out in accordance with the relevant health and safety regulations.
8. All work to be carried out in accordance with the relevant fire safety regulations.
9. All work to be carried out in accordance with the relevant accessibility regulations.
10. All work to be carried out in accordance with the relevant energy efficiency regulations.
11. All work to be carried out in accordance with the relevant sustainability regulations.
12. All work to be carried out in accordance with the relevant social and community regulations.
13. All work to be carried out in accordance with the relevant cultural and heritage regulations.
14. All work to be carried out in accordance with the relevant historical and archaeological regulations.
15. All work to be carried out in accordance with the relevant landscape and environmental regulations.
16. All work to be carried out in accordance with the relevant water and drainage regulations.
17. All work to be carried out in accordance with the relevant electrical and telecommunications regulations.
18. All work to be carried out in accordance with the relevant mechanical and plumbing regulations.
19. All work to be carried out in accordance with the relevant structural and foundation regulations.
20. All work to be carried out in accordance with the relevant civil and structural regulations.
21. All work to be carried out in accordance with the relevant architectural and design regulations.
22. All work to be carried out in accordance with the relevant engineering and construction regulations.
23. All work to be carried out in accordance with the relevant surveying and mapping regulations.
24. All work to be carried out in accordance with the relevant geotechnical and foundation regulations.
25. All work to be carried out in accordance with the relevant environmental and sustainability regulations.
26. All work to be carried out in accordance with the relevant health and safety regulations.
27. All work to be carried out in accordance with the relevant fire safety regulations.
28. All work to be carried out in accordance with the relevant accessibility regulations.
29. All work to be carried out in accordance with the relevant energy efficiency regulations.
30. All work to be carried out in accordance with the relevant sustainability regulations.
31. All work to be carried out in accordance with the relevant social and community regulations.
32. All work to be carried out in accordance with the relevant cultural and heritage regulations.
33. All work to be carried out in accordance with the relevant historical and archaeological regulations.
34. All work to be carried out in accordance with the relevant landscape and environmental regulations.
35. All work to be carried out in accordance with the relevant water and drainage regulations.
36. All work to be carried out in accordance with the relevant electrical and telecommunications regulations.
37. All work to be carried out in accordance with the relevant mechanical and plumbing regulations.
38. All work to be carried out in accordance with the relevant structural and foundation regulations.
39. All work to be carried out in accordance with the relevant civil and structural regulations.
40. All work to be carried out in accordance with the relevant architectural and design regulations.
41. All work to be carried out in accordance with the relevant engineering and construction regulations.
42. All work to be carried out in accordance with the relevant surveying and mapping regulations.
43. All work to be carried out in accordance with the relevant geotechnical and foundation regulations.
44. All work to be carried out in accordance with the relevant environmental and sustainability regulations.
45. All work to be carried out in accordance with the relevant health and safety regulations.
46. All work to be carried out in accordance with the relevant fire safety regulations.
47. All work to be carried out in accordance with the relevant accessibility regulations.
48. All work to be carried out in accordance with the relevant energy efficiency regulations.
49. All work to be carried out in accordance with the relevant sustainability regulations.
50. All work to be carried out in accordance with the relevant social and community regulations.
51. All work to be carried out in accordance with the relevant cultural and heritage regulations.
52. All work to be carried out in accordance with the relevant historical and archaeological regulations.
53. All work to be carried out in accordance with the relevant landscape and environmental regulations.
54. All work to be carried out in accordance with the relevant water and drainage regulations.
55. All work to be carried out in accordance with the relevant electrical and telecommunications regulations.
56. All work to be carried out in accordance with the relevant mechanical and plumbing regulations.
57. All work to be carried out in accordance with the relevant structural and foundation regulations.
58. All work to be carried out in accordance with the relevant civil and structural regulations.
59. All work to be carried out in accordance with the relevant architectural and design regulations.
60. All work to be carried out in accordance with the relevant engineering and construction regulations.
61. All work to be carried out in accordance with the relevant surveying and mapping regulations.
62. All work to be carried out in accordance with the relevant geotechnical and foundation regulations.
63. All work to be carried out in accordance with the relevant environmental and sustainability regulations.
64. All work to be carried out in accordance with the relevant health and safety regulations.
65. All work to be carried out in accordance with the relevant fire safety regulations.
66. All work to be carried out in accordance with the relevant accessibility regulations.
67. All work to be carried out in accordance with the relevant energy efficiency regulations.
68. All work to be carried out in accordance with the relevant sustainability regulations.
69. All work to be carried out in accordance with the relevant social and community regulations.
70. All work to be carried out in accordance with the relevant cultural and heritage regulations.
71. All work to be carried out in accordance with the relevant historical and archaeological regulations.
72. All work to be carried out in accordance with the relevant landscape and environmental regulations.
73. All work to be carried out in accordance with the relevant water and drainage regulations.
74. All work to be carried out in accordance with the relevant electrical and telecommunications regulations.
75. All work to be carried out in accordance with the relevant mechanical and plumbing regulations.
76. All work to be carried out in accordance with the relevant structural and foundation regulations.
77. All work to be carried out in accordance with the relevant civil and structural regulations.
78. All work to be carried out in accordance with the relevant architectural and design regulations.
79. All work to be carried out in accordance with the relevant engineering and construction regulations.
80. All work to be carried out in accordance with the relevant surveying and mapping regulations.
81. All work to be carried out in accordance with the relevant geotechnical and foundation regulations.
82. All work to be carried out in accordance with the relevant environmental and sustainability regulations.
83. All work to be carried out in accordance with the relevant health and safety regulations.
84. All work to be carried out in accordance with the relevant fire safety regulations.
85. All work to be carried out in accordance with the relevant accessibility regulations.
86. All work to be carried out in accordance with the relevant energy efficiency regulations.
87. All work to be carried out in accordance with the relevant sustainability regulations.
88. All work to be carried out in accordance with the relevant social and community regulations.
89. All work to be carried out in accordance with the relevant cultural and heritage regulations.
90. All work to be carried out in accordance with the relevant historical and archaeological regulations.
91. All work to be carried out in accordance with the relevant landscape and environmental regulations.
92. All work to be carried out in accordance with the relevant water and drainage regulations.
93. All work to be carried out in accordance with the relevant electrical and telecommunications regulations.
94. All work to be carried out in accordance with the relevant mechanical and plumbing regulations.
95. All work to be carried out in accordance with the relevant structural and foundation regulations.
96. All work to be carried out in accordance with the relevant civil and structural regulations.
97. All work to be carried out in accordance with the relevant architectural and design regulations.
98. All work to be carried out in accordance with the relevant engineering and construction regulations.
99. All work to be carried out in accordance with the relevant surveying and mapping regulations.
100. All work to be carried out in accordance with the relevant geotechnical and foundation regulations.

Client: Herold No. 21 Pty Ltd

Project: Lot 306 + Lot 307, Victoria Park, 11 Hutchinson Walk, Zealand

Scale: 1:100

Drawn by: [Name]

Checked by: [Name]

Approved by: [Name]

Date: 14.03.2012

Project No.: 1019

Draw No.: DA102

Scale: 1:100

Client: Turner + Associates

Project: Lot 306 + Lot 307, Victoria Park, 11 Hutchinson Walk, Zealand

Scale: 1:100

Drawn by: [Name]

Checked by: [Name]

Approved by: [Name]

Date: 14.03.2012

Project No.: 1019

Draw No.: DA102

Scale: 1:100

Client: Turner + Associates

ATTACHMENT A

VICTORIA PARK PARADE

BAOJIAL AVENUE



Legend

- 1. Unit
- 2. Common Area
- 3. Stairwell
- 4. Liftwell
- 5. Utility Area
- 6. Cycle Storage
- 7. Landscaped Courtyard
- 8. Car Stack
- 9. Common Area
- 10. Stairwell
- 11. Liftwell
- 12. Utility Area
- 13. Cycle Storage
- 14. Landscaped Courtyard
- 15. Car Stack

Notes & Features Legend

1. Common Area
2. Stairwell
3. Liftwell
4. Utility Area
5. Cycle Storage
6. Landscaped Courtyard
7. Car Stack
8. Common Area
9. Stairwell
10. Liftwell
11. Utility Area
12. Cycle Storage
13. Landscaped Courtyard
14. Car Stack

Notes

1. Units are shown with their respective floor plate areas and are subject to change without notice.
2. The site is shown with its boundary lines and setbacks from the surrounding streets.
3. The plan shows the layout of the buildings, common areas, and landscaping.
4. The units are shown with their respective bedroom counts and are subject to change without notice.
5. The common areas, stairwells, liftwells, and utility areas are shown with their respective locations and are subject to change without notice.
6. The cycle storage, landscaped courtyard, and car stack are shown with their respective locations and are subject to change without notice.
7. The setbacks from the surrounding streets are shown with their respective dimensions and are subject to change without notice.
8. The plan is shown with its title block and is subject to change without notice.

<p>Project No. 11019</p> <p>Date 11/03/19</p> <p>Scale 1:200</p> <p>Client Turner + Associates</p> <p>Address Lot 305 + Lot 306, Victoria Park, Hutchinsson Walk, Gisborne</p> <p>Level G2</p> <p>Plant</p>	<p>Prepared by [Name]</p> <p>Checked by [Name]</p> <p>Approved by [Name]</p> <p>Scale 1:200</p> <p>Date 11/03/19</p> <p>Client Turner + Associates</p> <p>Address Lot 305 + Lot 306, Victoria Park, Hutchinsson Walk, Gisborne</p> <p>Level G2</p> <p>Plant</p>
--	--

TURNER + ASSOCIATES
 11-12, Victoria Park, Hutchinsson Walk, Gisborne
 Phone: 06 866 6800 | Fax: 06 866 6801
 Email: info@turner.co.nz

ATTACHMENT A

VICTORIA PARK PARADE

SADICAL AVENUE

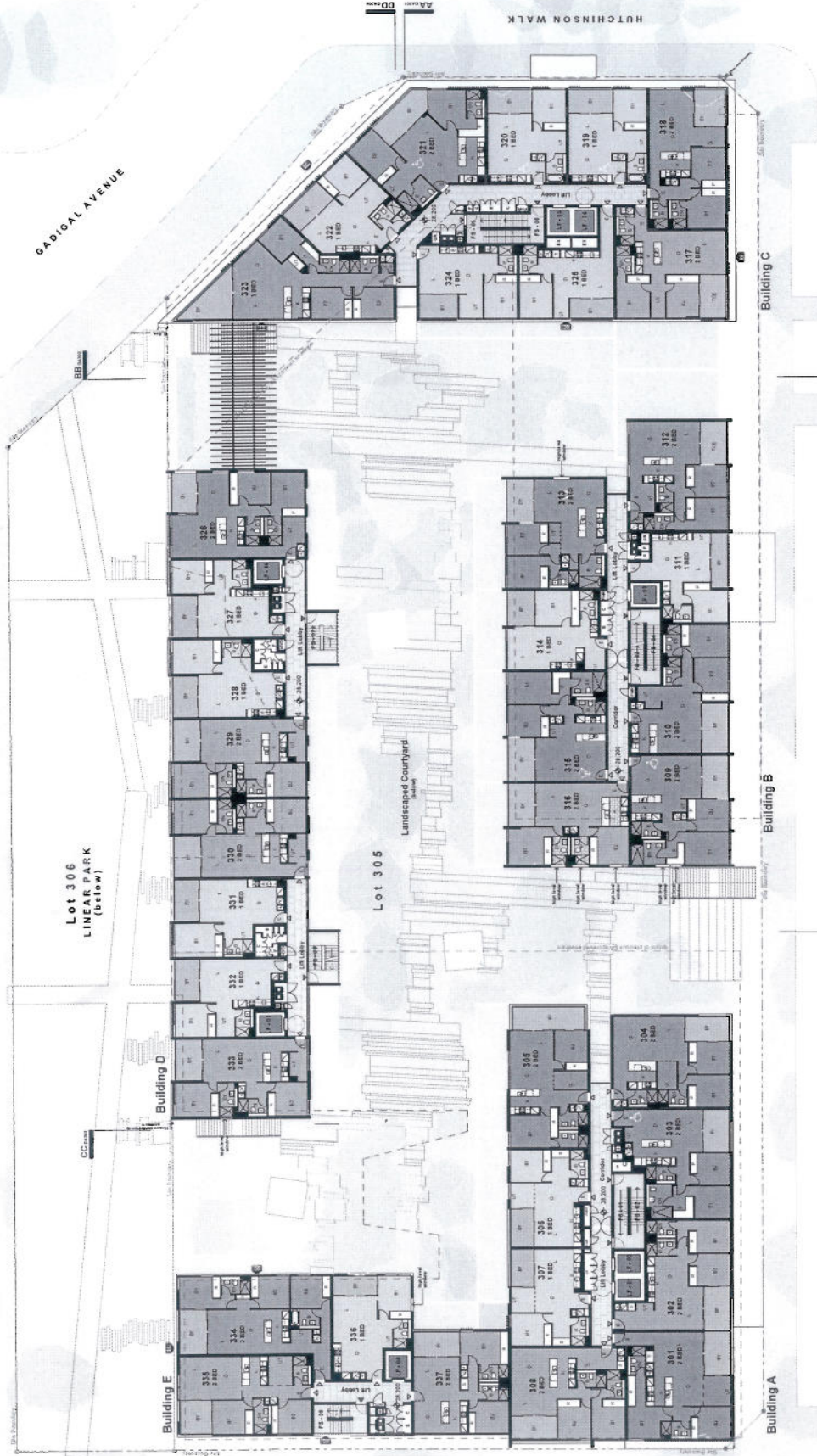
Lot 306
LINEAR PARK
(below)

KIRBY WALK
Hudson Ave
AA
DD

Lot 305
Landscaped Courtyard

GEORGE JULIUS AVE

HUTCHINSON WALK



Legend	Notes Legend
1.000	1.000
1.001	1.001
1.002	1.002
1.003	1.003
1.004	1.004
1.005	1.005
1.006	1.006
1.007	1.007
1.008	1.008
1.009	1.009
1.010	1.010
1.011	1.011
1.012	1.012
1.013	1.013
1.014	1.014
1.015	1.015
1.016	1.016
1.017	1.017
1.018	1.018
1.019	1.019
1.020	1.020
1.021	1.021
1.022	1.022
1.023	1.023
1.024	1.024
1.025	1.025
1.026	1.026
1.027	1.027
1.028	1.028
1.029	1.029
1.030	1.030
1.031	1.031
1.032	1.032
1.033	1.033
1.034	1.034
1.035	1.035
1.036	1.036
1.037	1.037
1.038	1.038
1.039	1.039
1.040	1.040
1.041	1.041
1.042	1.042
1.043	1.043
1.044	1.044
1.045	1.045
1.046	1.046
1.047	1.047
1.048	1.048
1.049	1.049
1.050	1.050

14.05.2022 NT City of Newcastle - City Council

No. Date: 10109

Project: 10109

Doc No: DA104

Doc Type: G

TURNER+ASSOCIATES

14.05.2022 10:17:11 AM

Lot 305 + Lot 306, Victoria Park
11 Hutchinson Walk, Zetland
NSW 2216
Level 03
Plans

Scale: 1:500

Author: [Name]

Checked: [Name]

Drawn: [Name]

Project Manager: [Name]

Project Engineer: [Name]

Project Architect: [Name]

Project Designer: [Name]

Project Draftsman: [Name]

Project Checker: [Name]

Project Approver: [Name]

Project Sign-off: [Name]

Project Date: [Date]

Project Status: [Status]

Project Location: [Location]

Project Client: [Client]

Project Contact: [Contact]

Project Phone: [Phone]

Project Email: [Email]

Project Website: [Website]

Project Social Media: [Social Media]

Project Other: [Other]

ATTACHMENT A

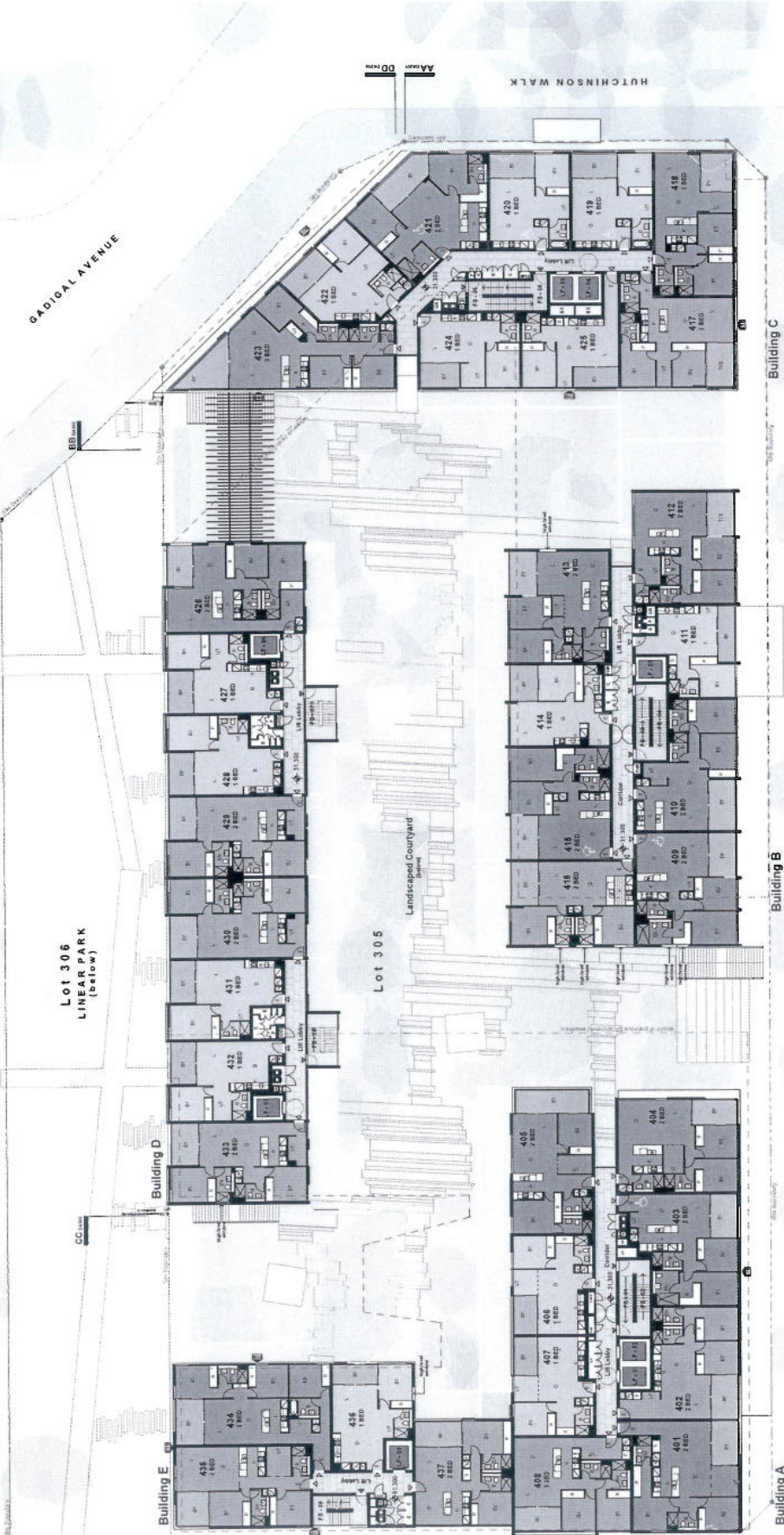
VICTORIA PARK PARADE

GADIGAL AVENUE

HUTCHINSON WALK

KIRBY WALK

GEORGE JULIUS AVE



Lot 306
LINEAR PARK
(below)

Lot 305
Landscaped Courtyard
(below)

Building D

Building E

Building B

Building A

Building C

Building A

Building B

Building C

Building D

Building E

Building B

Building C

Building D

Building E

Building B

Building C

Building D

Building E

- Legend:**
- Unit
- Corridor
- Lobby
- Lift Lobby
- Lift
- Stair
- Balcony
- Terrace
- Storage
- MSA
- Mechanical
- Plant
- Utility
- Pool
- Gym
- Office
- Retail
- Restaurant
- Bar
- Cinema
- Theatre
- Library
- School
- Church
- Mosque
- Synagogue
- Other

- Notes & Riders Legend:**
- Note 1
- Note 2
- Note 3
- Note 4
- Note 5
- Note 6
- Note 7
- Note 8
- Note 9
- Note 10
- Note 11
- Note 12
- Note 13
- Note 14
- Note 15
- Note 16
- Note 17
- Note 18
- Note 19
- Note 20

Sheet No. 21 Pty Ltd

11/11/2020 11:11:11 AM

11/11/2020 11:11:11 AM

11/11/2020 11:11:11 AM

11/11/2020 11:11:11 AM

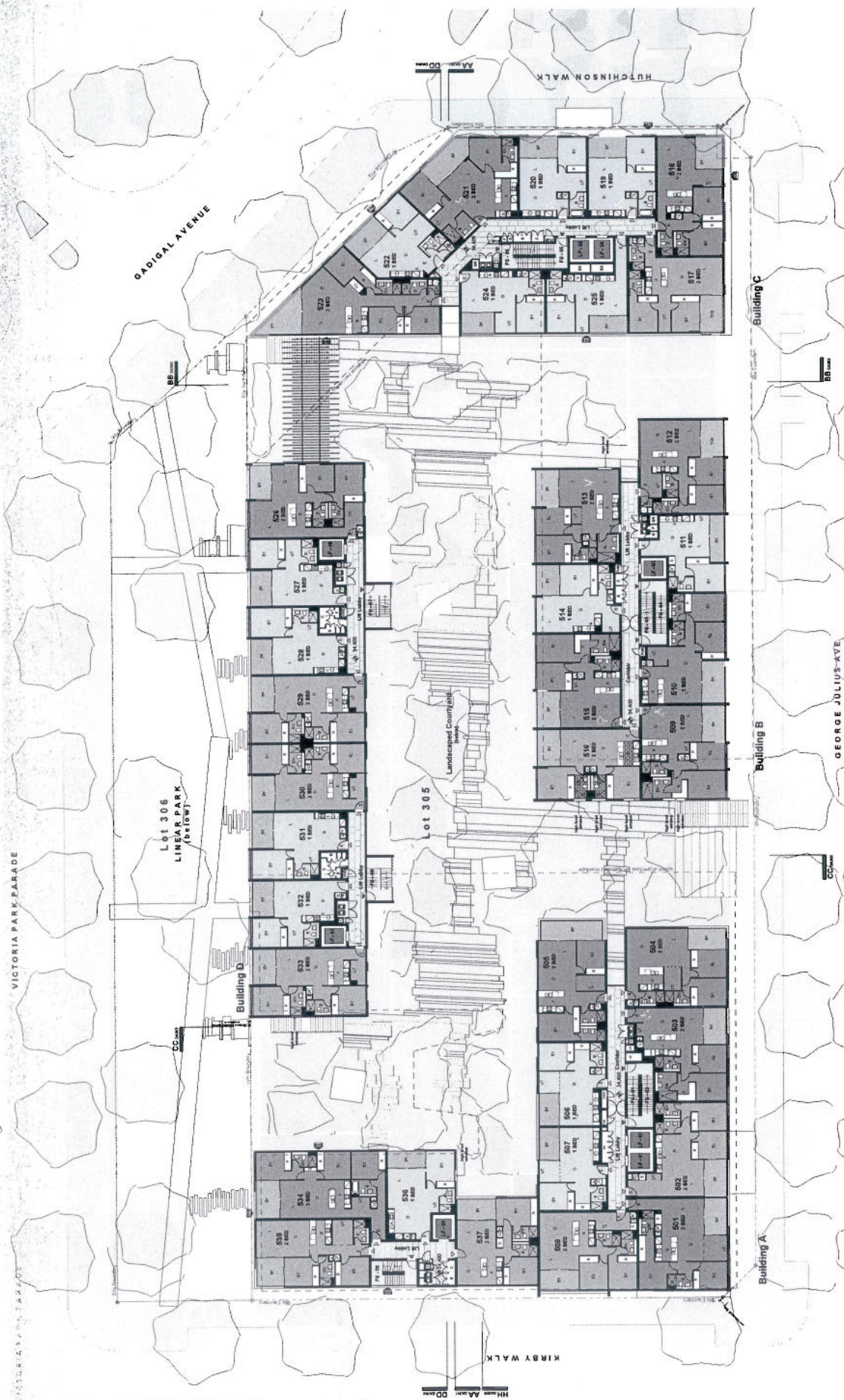
11/11/2020 11:11:11 AM

Project Title: Lot 305 + Lot 306 Victoria Park
11 Hutchinson Wk, Zealand
Scale: 1:200
Level: 04
Print

Rev: 04
Date: 14.06.2012
Appraised By: Registrar
Checked By: 11019
Scale: M4
Drawn By: DAISY
Project No: U

Turner + Associates
1/45 G Street Sydney NSW 2000 Australia
1/45 G Street Sydney NSW 2000 Australia

ATTACHMENT A



Legend

Notes Legend

Miscellaneous

- 1. Not to scale
- 2. Refer to drawings for details
- 3. Refer to drawings for details
- 4. Refer to drawings for details
- 5. Refer to drawings for details
- 6. Refer to drawings for details
- 7. Refer to drawings for details
- 8. Refer to drawings for details
- 9. Refer to drawings for details
- 10. Refer to drawings for details
- 11. Refer to drawings for details
- 12. Refer to drawings for details
- 13. Refer to drawings for details
- 14. Refer to drawings for details
- 15. Refer to drawings for details
- 16. Refer to drawings for details
- 17. Refer to drawings for details
- 18. Refer to drawings for details
- 19. Refer to drawings for details
- 20. Refer to drawings for details
- 21. Refer to drawings for details
- 22. Refer to drawings for details
- 23. Refer to drawings for details
- 24. Refer to drawings for details
- 25. Refer to drawings for details
- 26. Refer to drawings for details
- 27. Refer to drawings for details
- 28. Refer to drawings for details
- 29. Refer to drawings for details
- 30. Refer to drawings for details
- 31. Refer to drawings for details
- 32. Refer to drawings for details
- 33. Refer to drawings for details
- 34. Refer to drawings for details
- 35. Refer to drawings for details
- 36. Refer to drawings for details
- 37. Refer to drawings for details
- 38. Refer to drawings for details
- 39. Refer to drawings for details
- 40. Refer to drawings for details
- 41. Refer to drawings for details
- 42. Refer to drawings for details
- 43. Refer to drawings for details
- 44. Refer to drawings for details
- 45. Refer to drawings for details
- 46. Refer to drawings for details
- 47. Refer to drawings for details
- 48. Refer to drawings for details
- 49. Refer to drawings for details
- 50. Refer to drawings for details

Notes

1. All dimensions are in millimeters unless otherwise stated.

2. All work shall be in accordance with the New Zealand Building Code (NZBC).

3. All materials shall be of a quality and grade suitable for the intended use.

4. All work shall be completed in accordance with the drawings and specifications.

5. All work shall be subject to inspection and approval by the Council.

6. All work shall be completed within the stipulated time frame.

7. All work shall be completed in accordance with the drawings and specifications.

8. All work shall be subject to inspection and approval by the Council.

9. All work shall be completed within the stipulated time frame.

10. All work shall be completed in accordance with the drawings and specifications.

11. All work shall be subject to inspection and approval by the Council.

12. All work shall be completed within the stipulated time frame.

13. All work shall be completed in accordance with the drawings and specifications.

14. All work shall be subject to inspection and approval by the Council.

15. All work shall be completed within the stipulated time frame.

16. All work shall be completed in accordance with the drawings and specifications.

17. All work shall be subject to inspection and approval by the Council.

18. All work shall be completed within the stipulated time frame.

19. All work shall be completed in accordance with the drawings and specifications.

20. All work shall be subject to inspection and approval by the Council.

21. All work shall be completed within the stipulated time frame.

22. All work shall be completed in accordance with the drawings and specifications.

23. All work shall be subject to inspection and approval by the Council.

24. All work shall be completed within the stipulated time frame.

25. All work shall be completed in accordance with the drawings and specifications.

26. All work shall be subject to inspection and approval by the Council.

27. All work shall be completed within the stipulated time frame.

28. All work shall be completed in accordance with the drawings and specifications.

29. All work shall be subject to inspection and approval by the Council.

30. All work shall be completed within the stipulated time frame.

31. All work shall be completed in accordance with the drawings and specifications.

32. All work shall be subject to inspection and approval by the Council.

33. All work shall be completed within the stipulated time frame.

34. All work shall be completed in accordance with the drawings and specifications.

35. All work shall be subject to inspection and approval by the Council.

36. All work shall be completed within the stipulated time frame.

37. All work shall be completed in accordance with the drawings and specifications.

38. All work shall be subject to inspection and approval by the Council.

39. All work shall be completed within the stipulated time frame.

40. All work shall be completed in accordance with the drawings and specifications.

41. All work shall be subject to inspection and approval by the Council.

42. All work shall be completed within the stipulated time frame.

43. All work shall be completed in accordance with the drawings and specifications.

44. All work shall be subject to inspection and approval by the Council.

45. All work shall be completed within the stipulated time frame.

46. All work shall be completed in accordance with the drawings and specifications.

47. All work shall be subject to inspection and approval by the Council.

48. All work shall be completed within the stipulated time frame.

49. All work shall be completed in accordance with the drawings and specifications.

50. All work shall be subject to inspection and approval by the Council.

Project Information:

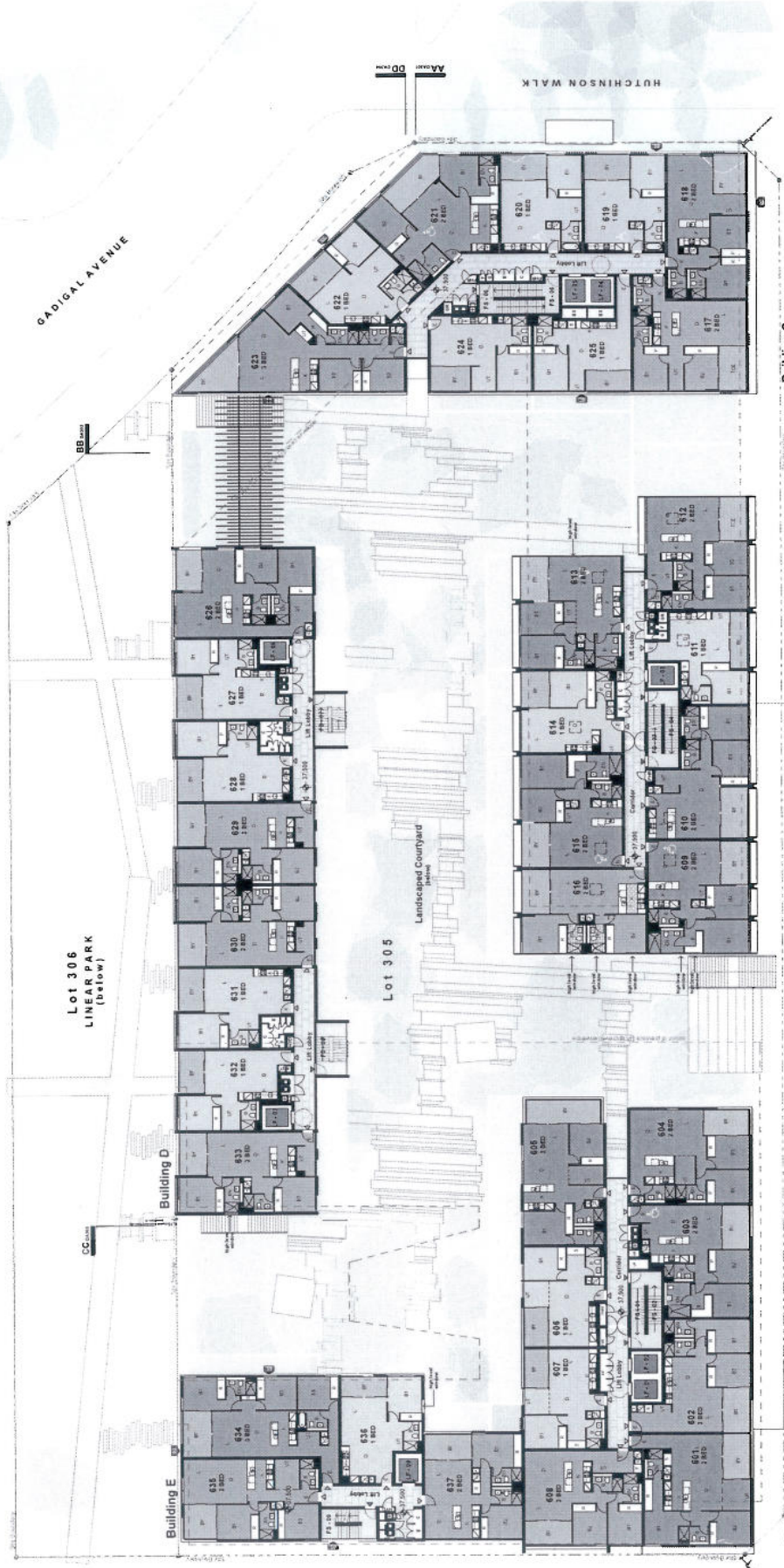
Project: **Lot 305 - Lot 08, Victoria Park**
Address: **11 Hutchinson Walk, Zealand**
Level: **Level 08**
Phase: **Phase**

Project No: **10109**
Date: **14.10.2013**
Drawn by: **J. L. Hayward**
Checked by: **J. L. Hayward**
Approved by: **J. L. Hayward**

TURNER + ASSOCIATES
15-191 Queen Street, Auckland, New Zealand
Tel: +64 9 308 1000 Fax: +64 9 308 1010

ATTACHMENT A

VICTORIA PARK PARADE



Building C

Building B

Building A

GEORGE JULIUS AVE

GADIGAL AVENUE

HUTCHINSON WALK

KIRBY WALK

Lot 306
LINEAR PARK
(below)

Lot 305

- Legend**
- 1.00 1.00 1.00
 - 1.01 1.01 1.01
 - 1.02 1.02 1.02
 - 1.03 1.03 1.03
 - 1.04 1.04 1.04
 - 1.05 1.05 1.05
 - 1.06 1.06 1.06
 - 1.07 1.07 1.07
 - 1.08 1.08 1.08
 - 1.09 1.09 1.09
 - 1.10 1.10 1.10
 - 1.11 1.11 1.11
 - 1.12 1.12 1.12
 - 1.13 1.13 1.13
 - 1.14 1.14 1.14
 - 1.15 1.15 1.15
 - 1.16 1.16 1.16
 - 1.17 1.17 1.17
 - 1.18 1.18 1.18
 - 1.19 1.19 1.19
 - 1.20 1.20 1.20
 - 1.21 1.21 1.21
 - 1.22 1.22 1.22
 - 1.23 1.23 1.23
 - 1.24 1.24 1.24
 - 1.25 1.25 1.25
 - 1.26 1.26 1.26
 - 1.27 1.27 1.27
 - 1.28 1.28 1.28
 - 1.29 1.29 1.29
 - 1.30 1.30 1.30
 - 1.31 1.31 1.31
 - 1.32 1.32 1.32
 - 1.33 1.33 1.33
 - 1.34 1.34 1.34
 - 1.35 1.35 1.35
 - 1.36 1.36 1.36
 - 1.37 1.37 1.37
 - 1.38 1.38 1.38
 - 1.39 1.39 1.39
 - 1.40 1.40 1.40
 - 1.41 1.41 1.41
 - 1.42 1.42 1.42
 - 1.43 1.43 1.43
 - 1.44 1.44 1.44
 - 1.45 1.45 1.45
 - 1.46 1.46 1.46
 - 1.47 1.47 1.47
 - 1.48 1.48 1.48
 - 1.49 1.49 1.49
 - 1.50 1.50 1.50
 - 1.51 1.51 1.51
 - 1.52 1.52 1.52
 - 1.53 1.53 1.53
 - 1.54 1.54 1.54
 - 1.55 1.55 1.55
 - 1.56 1.56 1.56
 - 1.57 1.57 1.57
 - 1.58 1.58 1.58
 - 1.59 1.59 1.59
 - 1.60 1.60 1.60
 - 1.61 1.61 1.61
 - 1.62 1.62 1.62
 - 1.63 1.63 1.63
 - 1.64 1.64 1.64
 - 1.65 1.65 1.65
 - 1.66 1.66 1.66
 - 1.67 1.67 1.67
 - 1.68 1.68 1.68
 - 1.69 1.69 1.69
 - 1.70 1.70 1.70
 - 1.71 1.71 1.71
 - 1.72 1.72 1.72
 - 1.73 1.73 1.73
 - 1.74 1.74 1.74
 - 1.75 1.75 1.75
 - 1.76 1.76 1.76
 - 1.77 1.77 1.77
 - 1.78 1.78 1.78
 - 1.79 1.79 1.79
 - 1.80 1.80 1.80
 - 1.81 1.81 1.81
 - 1.82 1.82 1.82
 - 1.83 1.83 1.83
 - 1.84 1.84 1.84
 - 1.85 1.85 1.85
 - 1.86 1.86 1.86
 - 1.87 1.87 1.87
 - 1.88 1.88 1.88
 - 1.89 1.89 1.89
 - 1.90 1.90 1.90
 - 1.91 1.91 1.91
 - 1.92 1.92 1.92
 - 1.93 1.93 1.93
 - 1.94 1.94 1.94
 - 1.95 1.95 1.95
 - 1.96 1.96 1.96
 - 1.97 1.97 1.97
 - 1.98 1.98 1.98
 - 1.99 1.99 1.99
 - 2.00 2.00 2.00
- Notes & Building Legend**
- 1.00 1.00 1.00
 - 1.01 1.01 1.01
 - 1.02 1.02 1.02
 - 1.03 1.03 1.03
 - 1.04 1.04 1.04
 - 1.05 1.05 1.05
 - 1.06 1.06 1.06
 - 1.07 1.07 1.07
 - 1.08 1.08 1.08
 - 1.09 1.09 1.09
 - 1.10 1.10 1.10
 - 1.11 1.11 1.11
 - 1.12 1.12 1.12
 - 1.13 1.13 1.13
 - 1.14 1.14 1.14
 - 1.15 1.15 1.15
 - 1.16 1.16 1.16
 - 1.17 1.17 1.17
 - 1.18 1.18 1.18
 - 1.19 1.19 1.19
 - 1.20 1.20 1.20
 - 1.21 1.21 1.21
 - 1.22 1.22 1.22
 - 1.23 1.23 1.23
 - 1.24 1.24 1.24
 - 1.25 1.25 1.25
 - 1.26 1.26 1.26
 - 1.27 1.27 1.27
 - 1.28 1.28 1.28
 - 1.29 1.29 1.29
 - 1.30 1.30 1.30
 - 1.31 1.31 1.31
 - 1.32 1.32 1.32
 - 1.33 1.33 1.33
 - 1.34 1.34 1.34
 - 1.35 1.35 1.35
 - 1.36 1.36 1.36
 - 1.37 1.37 1.37
 - 1.38 1.38 1.38
 - 1.39 1.39 1.39
 - 1.40 1.40 1.40
 - 1.41 1.41 1.41
 - 1.42 1.42 1.42
 - 1.43 1.43 1.43
 - 1.44 1.44 1.44
 - 1.45 1.45 1.45
 - 1.46 1.46 1.46
 - 1.47 1.47 1.47
 - 1.48 1.48 1.48
 - 1.49 1.49 1.49
 - 1.50 1.50 1.50
 - 1.51 1.51 1.51
 - 1.52 1.52 1.52
 - 1.53 1.53 1.53
 - 1.54 1.54 1.54
 - 1.55 1.55 1.55
 - 1.56 1.56 1.56
 - 1.57 1.57 1.57
 - 1.58 1.58 1.58
 - 1.59 1.59 1.59
 - 1.60 1.60 1.60
 - 1.61 1.61 1.61
 - 1.62 1.62 1.62
 - 1.63 1.63 1.63
 - 1.64 1.64 1.64
 - 1.65 1.65 1.65
 - 1.66 1.66 1.66
 - 1.67 1.67 1.67
 - 1.68 1.68 1.68
 - 1.69 1.69 1.69
 - 1.70 1.70 1.70
 - 1.71 1.71 1.71
 - 1.72 1.72 1.72
 - 1.73 1.73 1.73
 - 1.74 1.74 1.74
 - 1.75 1.75 1.75
 - 1.76 1.76 1.76
 - 1.77 1.77 1.77
 - 1.78 1.78 1.78
 - 1.79 1.79 1.79
 - 1.80 1.80 1.80
 - 1.81 1.81 1.81
 - 1.82 1.82 1.82
 - 1.83 1.83 1.83
 - 1.84 1.84 1.84
 - 1.85 1.85 1.85
 - 1.86 1.86 1.86
 - 1.87 1.87 1.87
 - 1.88 1.88 1.88
 - 1.89 1.89 1.89
 - 1.90 1.90 1.90
 - 1.91 1.91 1.91
 - 1.92 1.92 1.92
 - 1.93 1.93 1.93
 - 1.94 1.94 1.94
 - 1.95 1.95 1.95
 - 1.96 1.96 1.96
 - 1.97 1.97 1.97
 - 1.98 1.98 1.98
 - 1.99 1.99 1.99
 - 2.00 2.00 2.00

ATTACHMENT A

VICTORIA PARK PARADE

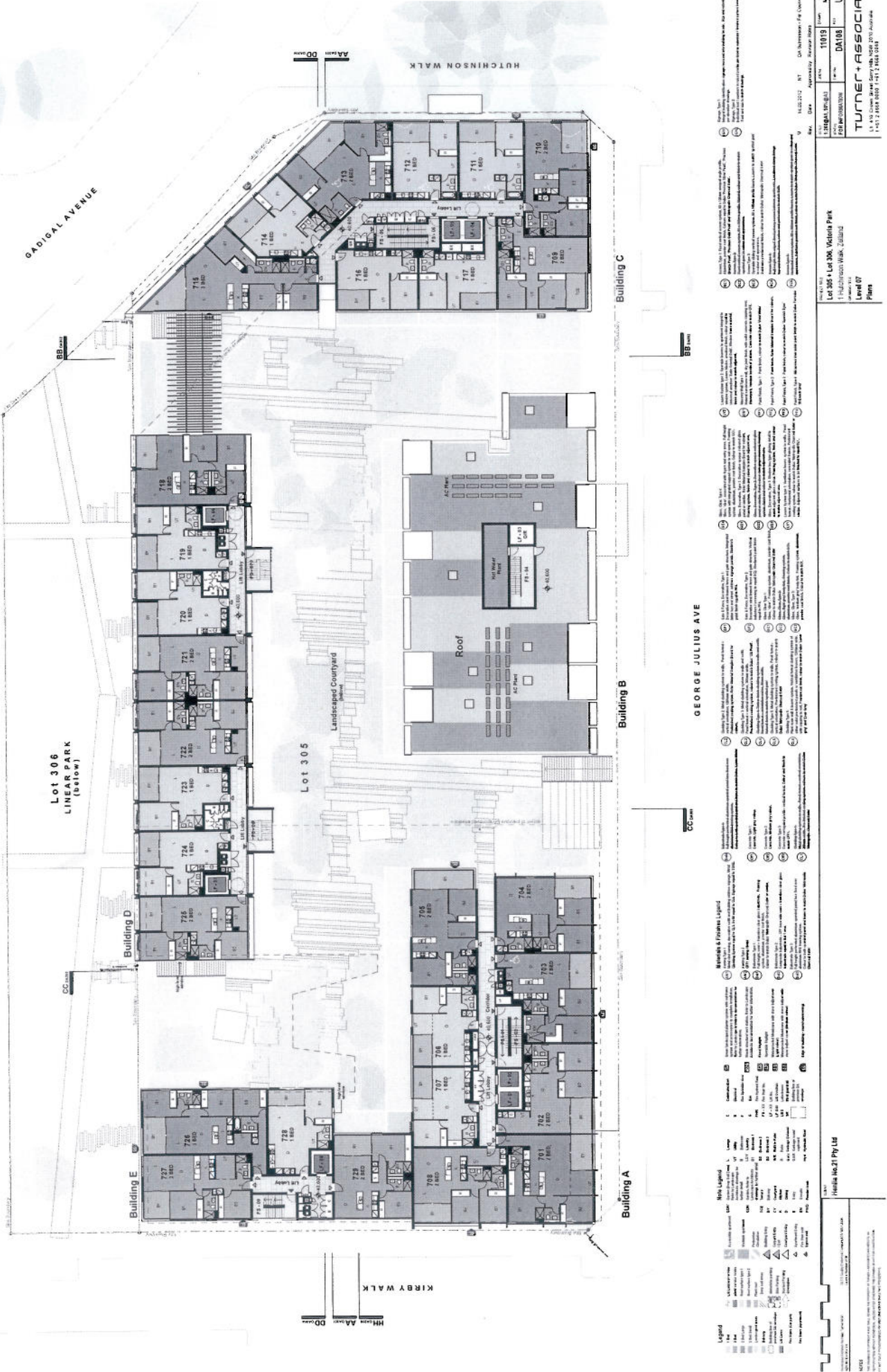
GADIGAL AVENUE

Lot 306
LINEAR PARK
(below)

KIRBY WALK

HUTCHINSON WALK

GEORGE JULIUS AVE



Legend

1	Structural	2	Roof	3	Roof Deck	4	Roof Terrace	5	Roof Garden	6	Roof Pool	7	Roof Deck	8	Roof Terrace	9	Roof Garden	10	Roof Pool
11	Roof Deck	12	Roof Terrace	13	Roof Garden	14	Roof Pool	15	Roof Deck	16	Roof Terrace	17	Roof Garden	18	Roof Pool	19	Roof Deck	20	Roof Terrace
21	Roof Garden	22	Roof Pool	23	Roof Deck	24	Roof Terrace	25	Roof Garden	26	Roof Pool	27	Roof Deck	28	Roof Terrace	29	Roof Garden	30	Roof Pool

Materials & Finishes Legend

1	Concrete	2	Brick	3	Stone	4	Timber	5	Glass	6	Steel	7	Aluminum	8	Copper	9	Gold Leaf	10	Silver Leaf
11	Plaster	12	Paint	13	Carpet	14	Tile	15	Wood	16	Marble	17	Granite	18	Slate	19	Quartz	20	Onyx

Scale: 1:100

Notes:
1. All dimensions are in millimeters unless otherwise stated.
2. All work to be in accordance with the Australian Standards.
3. All materials to be of the highest quality and suitable for the intended use.
4. All finishes to be in accordance with the Materials & Finishes Legend.
5. All work to be completed in accordance with the Building Code of Australia.

Project: Victoria Park Parade
Client: Victoria Park Parade
Date: 15/03/2012

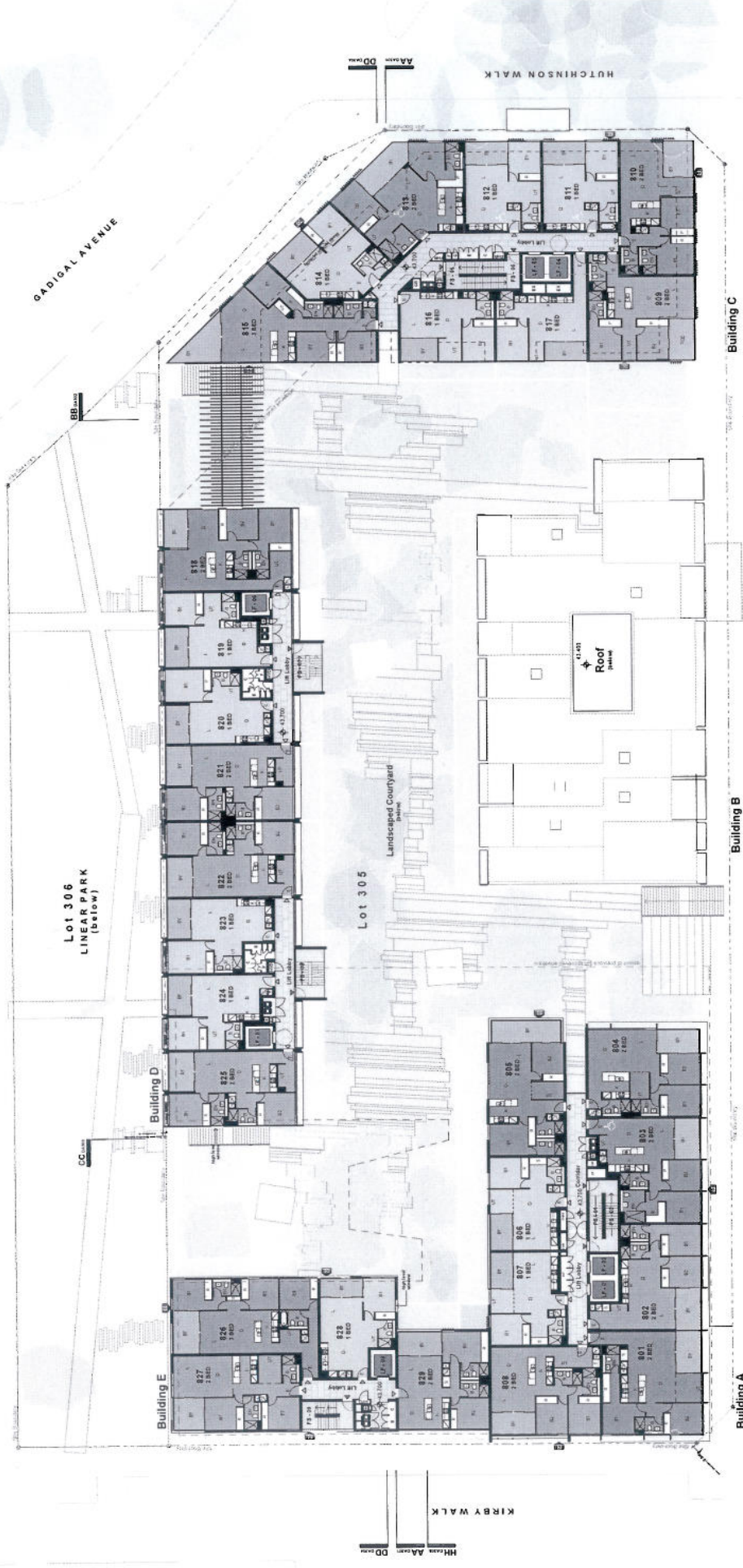
Author: [Name]
Checked: [Name]
Approved: [Name]

Turner + Associates
1-17-2-100-1000-1-17-2-100-1000

15/03/2012 RT DA-1000-1000-1000-1000
Max. Date: 15/03/2012
Approved: [Name]
Project: Victoria Park Parade
Client: Victoria Park Parade
Date: 15/03/2012
Author: [Name]
Checked: [Name]
Approved: [Name]
Turner + Associates
1-17-2-100-1000-1-17-2-100-1000

ATTACHMENT A

VICTORIA PARK PARADE



Legend

- 1.00 - 1.99 (Floor)
- 2.00 - 2.99 (Roof)
- 3.00 - 3.99 (Roof Terrace)
- 4.00 - 4.99 (Roof Terrace)
- 5.00 - 5.99 (Roof Terrace)
- 6.00 - 6.99 (Roof Terrace)
- 7.00 - 7.99 (Roof Terrace)
- 8.00 - 8.99 (Roof Terrace)
- 9.00 - 9.99 (Roof Terrace)
- 10.00 - 10.99 (Roof Terrace)
- 11.00 - 11.99 (Roof Terrace)
- 12.00 - 12.99 (Roof Terrace)
- 13.00 - 13.99 (Roof Terrace)
- 14.00 - 14.99 (Roof Terrace)
- 15.00 - 15.99 (Roof Terrace)
- 16.00 - 16.99 (Roof Terrace)
- 17.00 - 17.99 (Roof Terrace)
- 18.00 - 18.99 (Roof Terrace)
- 19.00 - 19.99 (Roof Terrace)
- 20.00 - 20.99 (Roof Terrace)
- 21.00 - 21.99 (Roof Terrace)
- 22.00 - 22.99 (Roof Terrace)
- 23.00 - 23.99 (Roof Terrace)
- 24.00 - 24.99 (Roof Terrace)
- 25.00 - 25.99 (Roof Terrace)
- 26.00 - 26.99 (Roof Terrace)
- 27.00 - 27.99 (Roof Terrace)
- 28.00 - 28.99 (Roof Terrace)
- 29.00 - 29.99 (Roof Terrace)
- 30.00 - 30.99 (Roof Terrace)
- 31.00 - 31.99 (Roof Terrace)
- 32.00 - 32.99 (Roof Terrace)
- 33.00 - 33.99 (Roof Terrace)
- 34.00 - 34.99 (Roof Terrace)
- 35.00 - 35.99 (Roof Terrace)
- 36.00 - 36.99 (Roof Terrace)
- 37.00 - 37.99 (Roof Terrace)
- 38.00 - 38.99 (Roof Terrace)
- 39.00 - 39.99 (Roof Terrace)
- 40.00 - 40.99 (Roof Terrace)
- 41.00 - 41.99 (Roof Terrace)
- 42.00 - 42.99 (Roof Terrace)
- 43.00 - 43.99 (Roof Terrace)
- 44.00 - 44.99 (Roof Terrace)
- 45.00 - 45.99 (Roof Terrace)
- 46.00 - 46.99 (Roof Terrace)
- 47.00 - 47.99 (Roof Terrace)
- 48.00 - 48.99 (Roof Terrace)
- 49.00 - 49.99 (Roof Terrace)
- 50.00 - 50.99 (Roof Terrace)
- 51.00 - 51.99 (Roof Terrace)
- 52.00 - 52.99 (Roof Terrace)
- 53.00 - 53.99 (Roof Terrace)
- 54.00 - 54.99 (Roof Terrace)
- 55.00 - 55.99 (Roof Terrace)
- 56.00 - 56.99 (Roof Terrace)
- 57.00 - 57.99 (Roof Terrace)
- 58.00 - 58.99 (Roof Terrace)
- 59.00 - 59.99 (Roof Terrace)
- 60.00 - 60.99 (Roof Terrace)
- 61.00 - 61.99 (Roof Terrace)
- 62.00 - 62.99 (Roof Terrace)
- 63.00 - 63.99 (Roof Terrace)
- 64.00 - 64.99 (Roof Terrace)
- 65.00 - 65.99 (Roof Terrace)
- 66.00 - 66.99 (Roof Terrace)
- 67.00 - 67.99 (Roof Terrace)
- 68.00 - 68.99 (Roof Terrace)
- 69.00 - 69.99 (Roof Terrace)
- 70.00 - 70.99 (Roof Terrace)
- 71.00 - 71.99 (Roof Terrace)
- 72.00 - 72.99 (Roof Terrace)
- 73.00 - 73.99 (Roof Terrace)
- 74.00 - 74.99 (Roof Terrace)
- 75.00 - 75.99 (Roof Terrace)
- 76.00 - 76.99 (Roof Terrace)
- 77.00 - 77.99 (Roof Terrace)
- 78.00 - 78.99 (Roof Terrace)
- 79.00 - 79.99 (Roof Terrace)
- 80.00 - 80.99 (Roof Terrace)
- 81.00 - 81.99 (Roof Terrace)
- 82.00 - 82.99 (Roof Terrace)
- 83.00 - 83.99 (Roof Terrace)
- 84.00 - 84.99 (Roof Terrace)
- 85.00 - 85.99 (Roof Terrace)
- 86.00 - 86.99 (Roof Terrace)
- 87.00 - 87.99 (Roof Terrace)
- 88.00 - 88.99 (Roof Terrace)
- 89.00 - 89.99 (Roof Terrace)
- 90.00 - 90.99 (Roof Terrace)
- 91.00 - 91.99 (Roof Terrace)
- 92.00 - 92.99 (Roof Terrace)
- 93.00 - 93.99 (Roof Terrace)
- 94.00 - 94.99 (Roof Terrace)
- 95.00 - 95.99 (Roof Terrace)
- 96.00 - 96.99 (Roof Terrace)
- 97.00 - 97.99 (Roof Terrace)
- 98.00 - 98.99 (Roof Terrace)
- 99.00 - 99.99 (Roof Terrace)
- 100.00 - 100.99 (Roof Terrace)
- 101.00 - 101.99 (Roof Terrace)
- 102.00 - 102.99 (Roof Terrace)
- 103.00 - 103.99 (Roof Terrace)
- 104.00 - 104.99 (Roof Terrace)
- 105.00 - 105.99 (Roof Terrace)
- 106.00 - 106.99 (Roof Terrace)
- 107.00 - 107.99 (Roof Terrace)
- 108.00 - 108.99 (Roof Terrace)
- 109.00 - 109.99 (Roof Terrace)
- 110.00 - 110.99 (Roof Terrace)
- 111.00 - 111.99 (Roof Terrace)
- 112.00 - 112.99 (Roof Terrace)
- 113.00 - 113.99 (Roof Terrace)
- 114.00 - 114.99 (Roof Terrace)
- 115.00 - 115.99 (Roof Terrace)
- 116.00 - 116.99 (Roof Terrace)
- 117.00 - 117.99 (Roof Terrace)
- 118.00 - 118.99 (Roof Terrace)
- 119.00 - 119.99 (Roof Terrace)
- 120.00 - 120.99 (Roof Terrace)

Materials & Finishes Legend

- 1.00 - 1.99 (Floor)
- 2.00 - 2.99 (Roof)
- 3.00 - 3.99 (Roof Terrace)
- 4.00 - 4.99 (Roof Terrace)
- 5.00 - 5.99 (Roof Terrace)
- 6.00 - 6.99 (Roof Terrace)
- 7.00 - 7.99 (Roof Terrace)
- 8.00 - 8.99 (Roof Terrace)
- 9.00 - 9.99 (Roof Terrace)
- 10.00 - 10.99 (Roof Terrace)
- 11.00 - 11.99 (Roof Terrace)
- 12.00 - 12.99 (Roof Terrace)
- 13.00 - 13.99 (Roof Terrace)
- 14.00 - 14.99 (Roof Terrace)
- 15.00 - 15.99 (Roof Terrace)
- 16.00 - 16.99 (Roof Terrace)
- 17.00 - 17.99 (Roof Terrace)
- 18.00 - 18.99 (Roof Terrace)
- 19.00 - 19.99 (Roof Terrace)
- 20.00 - 20.99 (Roof Terrace)
- 21.00 - 21.99 (Roof Terrace)
- 22.00 - 22.99 (Roof Terrace)
- 23.00 - 23.99 (Roof Terrace)
- 24.00 - 24.99 (Roof Terrace)
- 25.00 - 25.99 (Roof Terrace)
- 26.00 - 26.99 (Roof Terrace)
- 27.00 - 27.99 (Roof Terrace)
- 28.00 - 28.99 (Roof Terrace)
- 29.00 - 29.99 (Roof Terrace)
- 30.00 - 30.99 (Roof Terrace)
- 31.00 - 31.99 (Roof Terrace)
- 32.00 - 32.99 (Roof Terrace)
- 33.00 - 33.99 (Roof Terrace)
- 34.00 - 34.99 (Roof Terrace)
- 35.00 - 35.99 (Roof Terrace)
- 36.00 - 36.99 (Roof Terrace)
- 37.00 - 37.99 (Roof Terrace)
- 38.00 - 38.99 (Roof Terrace)
- 39.00 - 39.99 (Roof Terrace)
- 40.00 - 40.99 (Roof Terrace)
- 41.00 - 41.99 (Roof Terrace)
- 42.00 - 42.99 (Roof Terrace)
- 43.00 - 43.99 (Roof Terrace)
- 44.00 - 44.99 (Roof Terrace)
- 45.00 - 45.99 (Roof Terrace)
- 46.00 - 46.99 (Roof Terrace)
- 47.00 - 47.99 (Roof Terrace)
- 48.00 - 48.99 (Roof Terrace)
- 49.00 - 49.99 (Roof Terrace)
- 50.00 - 50.99 (Roof Terrace)
- 51.00 - 51.99 (Roof Terrace)
- 52.00 - 52.99 (Roof Terrace)
- 53.00 - 53.99 (Roof Terrace)
- 54.00 - 54.99 (Roof Terrace)
- 55.00 - 55.99 (Roof Terrace)
- 56.00 - 56.99 (Roof Terrace)
- 57.00 - 57.99 (Roof Terrace)
- 58.00 - 58.99 (Roof Terrace)
- 59.00 - 59.99 (Roof Terrace)
- 60.00 - 60.99 (Roof Terrace)
- 61.00 - 61.99 (Roof Terrace)
- 62.00 - 62.99 (Roof Terrace)
- 63.00 - 63.99 (Roof Terrace)
- 64.00 - 64.99 (Roof Terrace)
- 65.00 - 65.99 (Roof Terrace)
- 66.00 - 66.99 (Roof Terrace)
- 67.00 - 67.99 (Roof Terrace)
- 68.00 - 68.99 (Roof Terrace)
- 69.00 - 69.99 (Roof Terrace)
- 70.00 - 70.99 (Roof Terrace)
- 71.00 - 71.99 (Roof Terrace)
- 72.00 - 72.99 (Roof Terrace)
- 73.00 - 73.99 (Roof Terrace)
- 74.00 - 74.99 (Roof Terrace)
- 75.00 - 75.99 (Roof Terrace)
- 76.00 - 76.99 (Roof Terrace)
- 77.00 - 77.99 (Roof Terrace)
- 78.00 - 78.99 (Roof Terrace)
- 79.00 - 79.99 (Roof Terrace)
- 80.00 - 80.99 (Roof Terrace)
- 81.00 - 81.99 (Roof Terrace)
- 82.00 - 82.99 (Roof Terrace)
- 83.00 - 83.99 (Roof Terrace)
- 84.00 - 84.99 (Roof Terrace)
- 85.00 - 85.99 (Roof Terrace)
- 86.00 - 86.99 (Roof Terrace)
- 87.00 - 87.99 (Roof Terrace)
- 88.00 - 88.99 (Roof Terrace)
- 89.00 - 89.99 (Roof Terrace)
- 90.00 - 90.99 (Roof Terrace)
- 91.00 - 91.99 (Roof Terrace)
- 92.00 - 92.99 (Roof Terrace)
- 93.00 - 93.99 (Roof Terrace)
- 94.00 - 94.99 (Roof Terrace)
- 95.00 - 95.99 (Roof Terrace)
- 96.00 - 96.99 (Roof Terrace)
- 97.00 - 97.99 (Roof Terrace)
- 98.00 - 98.99 (Roof Terrace)
- 99.00 - 99.99 (Roof Terrace)
- 100.00 - 100.99 (Roof Terrace)
- 101.00 - 101.99 (Roof Terrace)
- 102.00 - 102.99 (Roof Terrace)
- 103.00 - 103.99 (Roof Terrace)
- 104.00 - 104.99 (Roof Terrace)
- 105.00 - 105.99 (Roof Terrace)
- 106.00 - 106.99 (Roof Terrace)
- 107.00 - 107.99 (Roof Terrace)
- 108.00 - 108.99 (Roof Terrace)
- 109.00 - 109.99 (Roof Terrace)
- 110.00 - 110.99 (Roof Terrace)
- 111.00 - 111.99 (Roof Terrace)
- 112.00 - 112.99 (Roof Terrace)
- 113.00 - 113.99 (Roof Terrace)
- 114.00 - 114.99 (Roof Terrace)
- 115.00 - 115.99 (Roof Terrace)
- 116.00 - 116.99 (Roof Terrace)
- 117.00 - 117.99 (Roof Terrace)
- 118.00 - 118.99 (Roof Terrace)
- 119.00 - 119.99 (Roof Terrace)
- 120.00 - 120.99 (Roof Terrace)

Notes

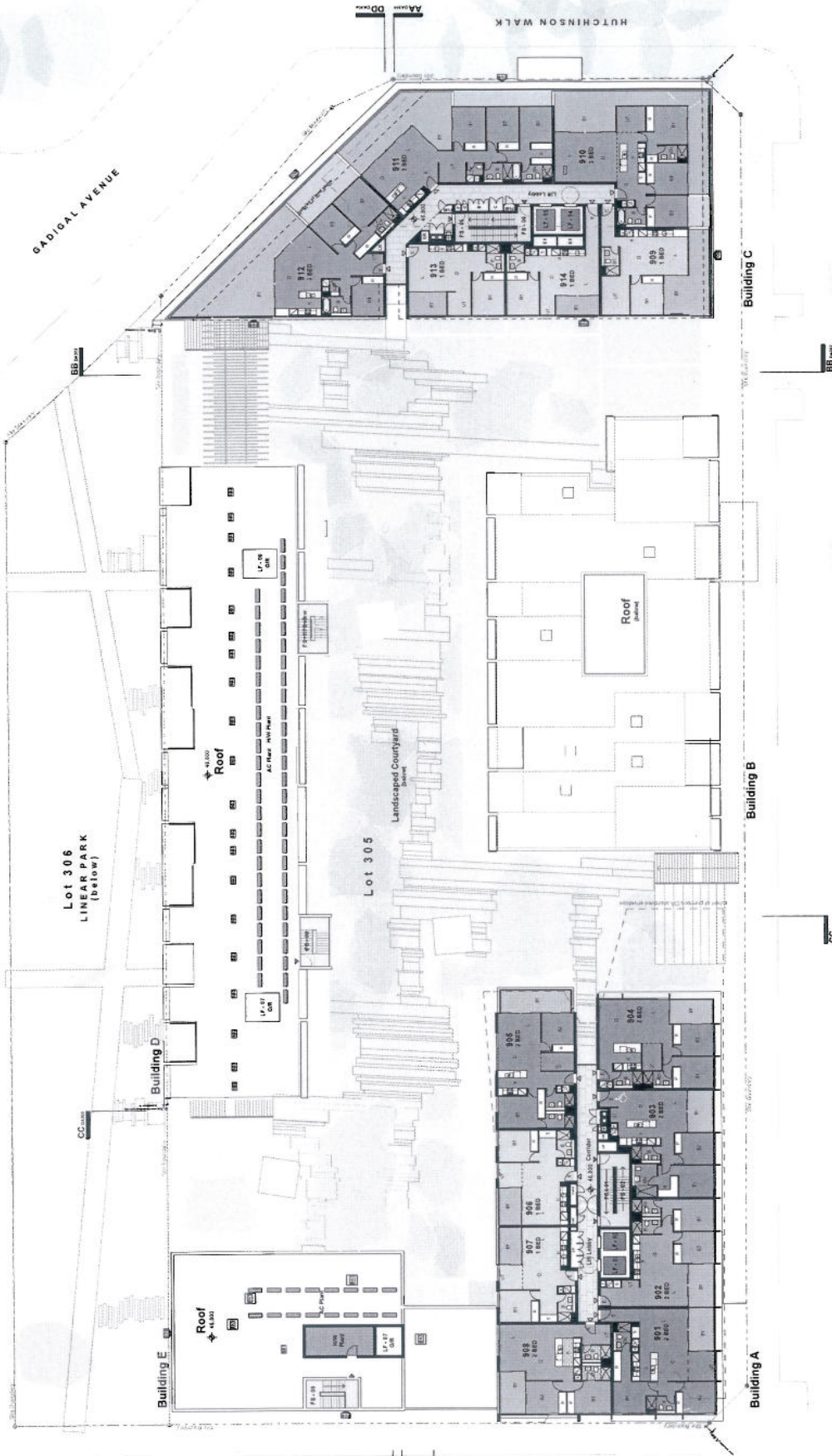
1. All dimensions are in millimeters.
2. All measurements are to the center of the wall.
3. All openings are to the center of the opening.
4. All elevations are in meters above mean sea level (AMSL).
5. All levels are to the finished floor level.
6. All levels are to be confirmed by the contractor.
7. All levels are to be confirmed by the engineer.
8. All levels are to be confirmed by the architect.
9. All levels are to be confirmed by the client.
10. All levels are to be confirmed by the authority.
11. All levels are to be confirmed by the council.
12. All levels are to be confirmed by the department.
13. All levels are to be confirmed by the state.
14. All levels are to be confirmed by the nation.
15. All levels are to be confirmed by the world.
16. All levels are to be confirmed by the universe.
17. All levels are to be confirmed by the cosmos.
18. All levels are to be confirmed by the galaxy.
19. All levels are to be confirmed by the solar system.
20. All levels are to be confirmed by the planet.
21. All levels are to be confirmed by the continent.
22. All levels are to be confirmed by the country.
23. All levels are to be confirmed by the region.
24. All levels are to be confirmed by the state.
25. All levels are to be confirmed by the city.
26. All levels are to be confirmed by the district.
27. All levels are to be confirmed by the ward.
28. All levels are to be confirmed by the street.
29. All levels are to be confirmed by the road.
30. All levels are to be confirmed by the highway.
31. All levels are to be confirmed by the airport.
32. All levels are to be confirmed by the port.
33. All levels are to be confirmed by the harbor.
34. All levels are to be confirmed by the bay.
35. All levels are to be confirmed by the sea.
36. All levels are to be confirmed by the ocean.
37. All levels are to be confirmed by the sky.
38. All levels are to be confirmed by the air.
39. All levels are to be confirmed by the earth.
40. All levels are to be confirmed by the ground.
41. All levels are to be confirmed by the water.
42. All levels are to be confirmed by the fire.
43. All levels are to be confirmed by the wind.
44. All levels are to be confirmed by the rain.
45. All levels are to be confirmed by the snow.
46. All levels are to be confirmed by the ice.
47. All levels are to be confirmed by the cloud.
48. All levels are to be confirmed by the sun.
49. All levels are to be confirmed by the moon.
50. All levels are to be confirmed by the stars.
51. All levels are to be confirmed by the planets.
52. All levels are to be confirmed by the galaxies.
53. All levels are to be confirmed by the universe.
54. All levels are to be confirmed by the cosmos.
55. All levels are to be confirmed by the galaxy.
56. All levels are to be confirmed by the solar system.
57. All levels are to be confirmed by the planet.
58. All levels are to be confirmed by the continent.
59. All levels are to be confirmed by the country.
60. All levels are to be confirmed by the region.
61. All levels are to be confirmed by the state.
62. All levels are to be confirmed by the city.
63. All levels are to be confirmed by the district.
64. All levels are to be confirmed by the ward.
65. All levels are to be confirmed by the street.
66. All levels are to be confirmed by the road.
67. All levels are to be confirmed by the highway.
68. All levels are to be confirmed by the airport.
69. All levels are to be confirmed by the port.
70. All levels are to be confirmed by the harbor.
71. All levels are to be confirmed by the bay.
72. All levels are to be confirmed by the sea.
73. All levels are to be confirmed by the ocean.
74. All levels are to be confirmed by the sky.
75. All levels are to be confirmed by the air.
76. All levels are to be confirmed by the earth.
77. All levels are to be confirmed by the ground.
78. All levels are to be confirmed by the water.
79. All levels are to be confirmed by the fire.
80. All levels are to be confirmed by the wind.
81. All levels are to be confirmed by the rain.
82. All levels are to be confirmed by the snow.
83. All levels are to be confirmed by the ice.
84. All levels are to be confirmed by the cloud.
85. All levels are to be confirmed by the sun.
86. All levels are to be confirmed by the moon.
87. All levels are to be confirmed by the stars.
88. All levels are to be confirmed by the planets.
89. All levels are to be confirmed by the galaxies.
90. All levels are to be confirmed by the universe.

Client: **Turner + Associates**
 Project: **Lot 305 & Lot 306, Victoria Park**
 Date: **14.08.2012** NT
 Drawing No: **DA108**
 Scale: **1:100**
 Drawing Date: **14.08.2012**
 Drawing By: **[Signature]**
 Drawing Check: **[Signature]**

Turner + Associates
 1/5-7, Lacey Street, Perth WA 6000
 T +61 8 9444 0000
 F +61 8 9444 0000
 www.turnerandassociates.com.au

ATTACHMENT A

VICTORIA PARK PARADE



- Legend**
- 1.000 - 1.000
 - 1.001 - 1.001
 - 1.002 - 1.002
 - 1.003 - 1.003
 - 1.004 - 1.004
 - 1.005 - 1.005
 - 1.006 - 1.006
 - 1.007 - 1.007
 - 1.008 - 1.008
 - 1.009 - 1.009
 - 1.010 - 1.010
 - 1.011 - 1.011
 - 1.012 - 1.012
 - 1.013 - 1.013
 - 1.014 - 1.014
 - 1.015 - 1.015
 - 1.016 - 1.016
 - 1.017 - 1.017
 - 1.018 - 1.018
 - 1.019 - 1.019
 - 1.020 - 1.020
 - 1.021 - 1.021
 - 1.022 - 1.022
 - 1.023 - 1.023
 - 1.024 - 1.024
 - 1.025 - 1.025
 - 1.026 - 1.026
 - 1.027 - 1.027
 - 1.028 - 1.028
 - 1.029 - 1.029
 - 1.030 - 1.030
 - 1.031 - 1.031
 - 1.032 - 1.032
 - 1.033 - 1.033
 - 1.034 - 1.034
 - 1.035 - 1.035
 - 1.036 - 1.036
 - 1.037 - 1.037
 - 1.038 - 1.038
 - 1.039 - 1.039
 - 1.040 - 1.040
 - 1.041 - 1.041
 - 1.042 - 1.042
 - 1.043 - 1.043
 - 1.044 - 1.044
 - 1.045 - 1.045
 - 1.046 - 1.046
 - 1.047 - 1.047
 - 1.048 - 1.048
 - 1.049 - 1.049
 - 1.050 - 1.050
 - 1.051 - 1.051
 - 1.052 - 1.052
 - 1.053 - 1.053
 - 1.054 - 1.054
 - 1.055 - 1.055
 - 1.056 - 1.056
 - 1.057 - 1.057
 - 1.058 - 1.058
 - 1.059 - 1.059
 - 1.060 - 1.060
 - 1.061 - 1.061
 - 1.062 - 1.062
 - 1.063 - 1.063
 - 1.064 - 1.064
 - 1.065 - 1.065
 - 1.066 - 1.066
 - 1.067 - 1.067
 - 1.068 - 1.068
 - 1.069 - 1.069
 - 1.070 - 1.070
 - 1.071 - 1.071
 - 1.072 - 1.072
 - 1.073 - 1.073
 - 1.074 - 1.074
 - 1.075 - 1.075
 - 1.076 - 1.076
 - 1.077 - 1.077
 - 1.078 - 1.078
 - 1.079 - 1.079
 - 1.080 - 1.080
 - 1.081 - 1.081
 - 1.082 - 1.082
 - 1.083 - 1.083
 - 1.084 - 1.084
 - 1.085 - 1.085
 - 1.086 - 1.086
 - 1.087 - 1.087
 - 1.088 - 1.088
 - 1.089 - 1.089
 - 1.090 - 1.090
 - 1.091 - 1.091
 - 1.092 - 1.092
 - 1.093 - 1.093
 - 1.094 - 1.094
 - 1.095 - 1.095
 - 1.096 - 1.096
 - 1.097 - 1.097
 - 1.098 - 1.098
 - 1.099 - 1.099
 - 1.100 - 1.100
 - 1.101 - 1.101
 - 1.102 - 1.102
 - 1.103 - 1.103
 - 1.104 - 1.104
 - 1.105 - 1.105
 - 1.106 - 1.106
 - 1.107 - 1.107
 - 1.108 - 1.108
 - 1.109 - 1.109
 - 1.110 - 1.110
 - 1.111 - 1.111
 - 1.112 - 1.112
 - 1.113 - 1.113
 - 1.114 - 1.114
 - 1.115 - 1.115
 - 1.116 - 1.116
 - 1.117 - 1.117
 - 1.118 - 1.118
 - 1.119 - 1.119
 - 1.120 - 1.120
 - 1.121 - 1.121
 - 1.122 - 1.122
 - 1.123 - 1.123
 - 1.124 - 1.124
 - 1.125 - 1.125
 - 1.126 - 1.126
 - 1.127 - 1.127
 - 1.128 - 1.128
 - 1.129 - 1.129
 - 1.130 - 1.130
 - 1.131 - 1.131
 - 1.132 - 1.132
 - 1.133 - 1.133
 - 1.134 - 1.134
 - 1.135 - 1.135
 - 1.136 - 1.136
 - 1.137 - 1.137
 - 1.138 - 1.138
 - 1.139 - 1.139
 - 1.140 - 1.140
 - 1.141 - 1.141
 - 1.142 - 1.142
 - 1.143 - 1.143
 - 1.144 - 1.144
 - 1.145 - 1.145
 - 1.146 - 1.146
 - 1.147 - 1.147
 - 1.148 - 1.148
 - 1.149 - 1.149
 - 1.150 - 1.150
 - 1.151 - 1.151
 - 1.152 - 1.152
 - 1.153 - 1.153
 - 1.154 - 1.154
 - 1.155 - 1.155
 - 1.156 - 1.156
 - 1.157 - 1.157
 - 1.158 - 1.158
 - 1.159 - 1.159
 - 1.160 - 1.160
 - 1.161 - 1.161
 - 1.162 - 1.162
 - 1.163 - 1.163
 - 1.164 - 1.164
 - 1.165 - 1.165
 - 1.166 - 1.166
 - 1.167 - 1.167
 - 1.168 - 1.168
 - 1.169 - 1.169
 - 1.170 - 1.170
 - 1.171 - 1.171
 - 1.172 - 1.172
 - 1.173 - 1.173
 - 1.174 - 1.174
 - 1.175 - 1.175
 - 1.176 - 1.176
 - 1.177 - 1.177
 - 1.178 - 1.178
 - 1.179 - 1.179
 - 1.180 - 1.180
 - 1.181 - 1.181
 - 1.182 - 1.182
 - 1.183 - 1.183
 - 1.184 - 1.184
 - 1.185 - 1.185
 - 1.186 - 1.186
 - 1.187 - 1.187
 - 1.188 - 1.188
 - 1.189 - 1.189
 - 1.190 - 1.190
 - 1.191 - 1.191
 - 1.192 - 1.192
 - 1.193 - 1.193
 - 1.194 - 1.194
 - 1.195 - 1.195
 - 1.196 - 1.196
 - 1.197 - 1.197
 - 1.198 - 1.198
 - 1.199 - 1.199
 - 1.200 - 1.200

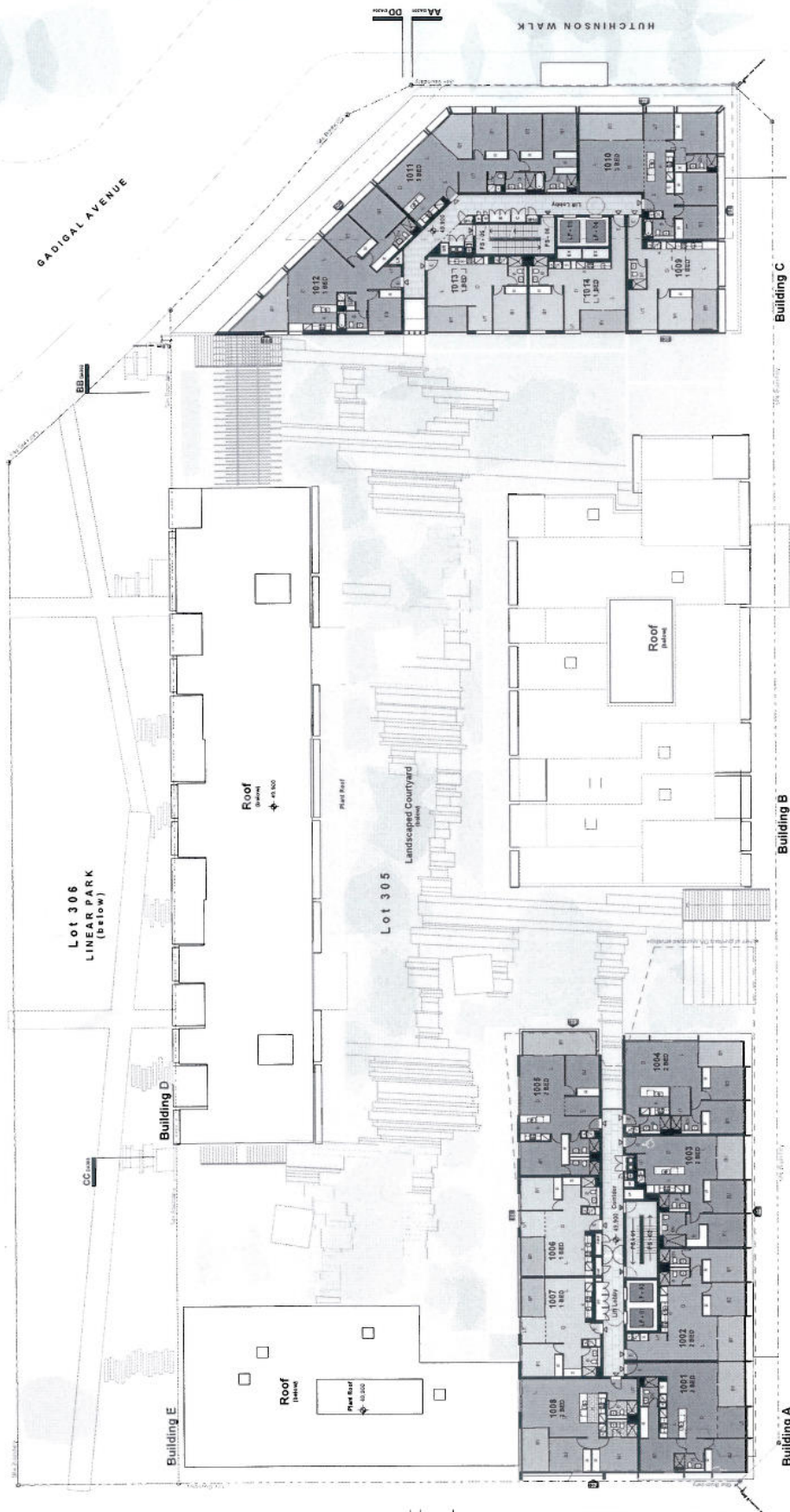
Project Name: Lot 305 - 1st Flr, Victoria Park
 Project Location: Hutchinsoo Walk, Sydney
 Level: 09
 Date: 14/02/2019
 Drawn By: DA110
 Checked By: T
 Scale: 1:100
 Project No: 10109
 Client: Turner + Associates
 1/417 2/888 0000 1/417 2/888 0001

Notes:
 1. All dimensions are in millimeters unless otherwise stated.
 2. All work is to be in accordance with the Australian Standards and relevant codes of practice.
 3. All materials and finishes to be as specified in the schedule of materials and finishes.
 4. All work to be completed in accordance with the program of works.
 5. All work to be completed in accordance with the specifications and standards of the relevant authorities.
 6. All work to be completed in accordance with the requirements of the relevant authorities.
 7. All work to be completed in accordance with the requirements of the relevant authorities.
 8. All work to be completed in accordance with the requirements of the relevant authorities.
 9. All work to be completed in accordance with the requirements of the relevant authorities.
 10. All work to be completed in accordance with the requirements of the relevant authorities.

ATTACHMENT A

VICTORIA PARK PARADE

GADIGAL AVENUE



NOTES

1. All dimensions are to the centerline of walls.
2. All dimensions are to the centerline of walls.
3. All dimensions are to the centerline of walls.
4. All dimensions are to the centerline of walls.
5. All dimensions are to the centerline of walls.
6. All dimensions are to the centerline of walls.
7. All dimensions are to the centerline of walls.
8. All dimensions are to the centerline of walls.
9. All dimensions are to the centerline of walls.
10. All dimensions are to the centerline of walls.

Room Schedule

Room No.	Description	Area (sqm)
1001	1 BED	45.00
1002	1 BED	45.00
1003	1 BED	45.00
1004	2 BED	65.00
1005	1 BED	45.00
1006	1 BED	45.00
1007	1 BED	45.00
1008	7 BED	150.00

Material & Finish Legend

1	Concrete	Grey
2	Brickwork	Red
3	Plasterboard	White
4	Paintwork	White
5	Roofing	Asph/Flt
6	Landscaping	Grass
7	Roofing	Asph/Flt
8	Landscaping	Grass
9	Roofing	Asph/Flt
10	Landscaping	Grass

14-2-2012 RT U Approved By Council

10109

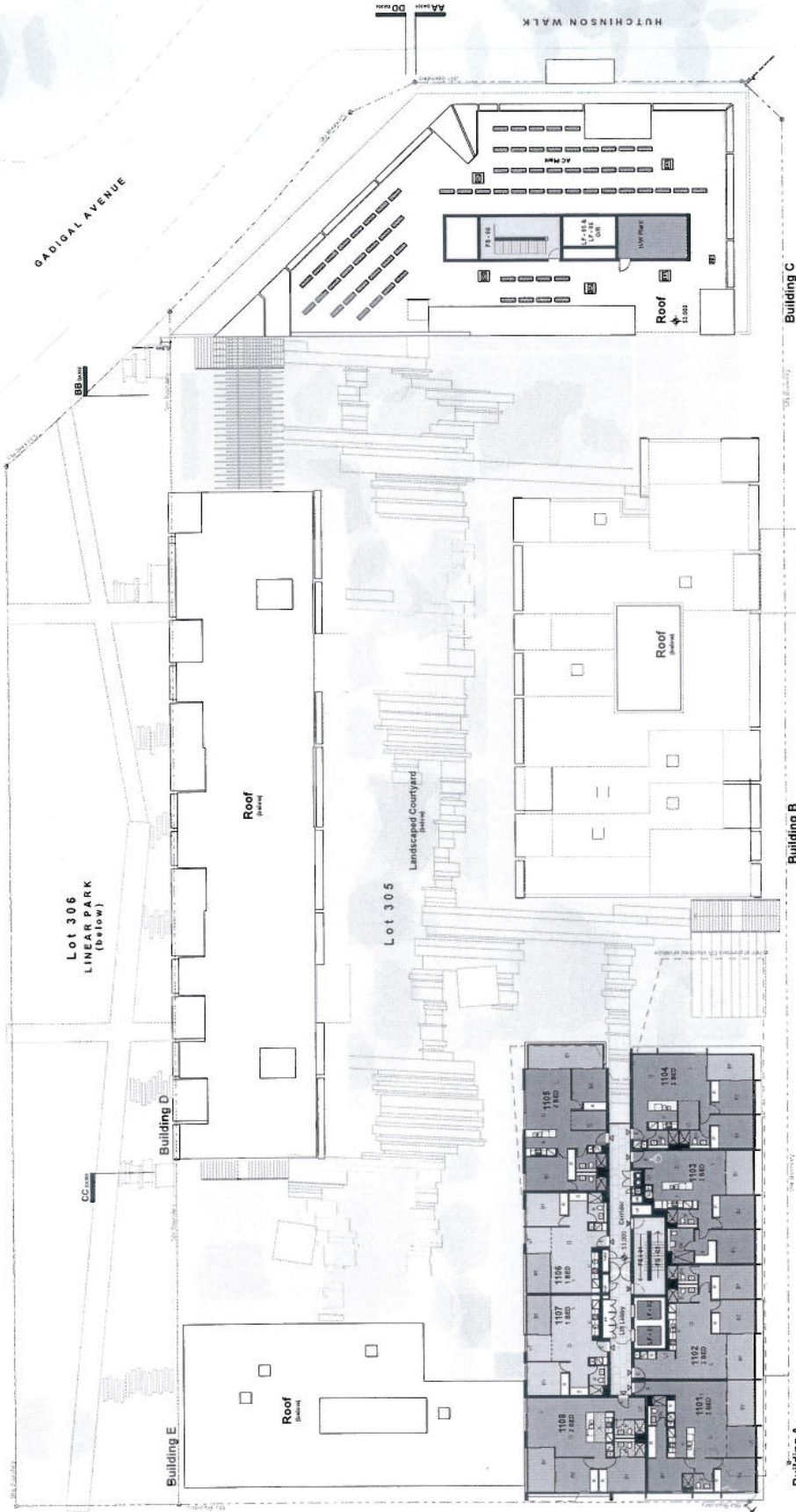
TURNER+ASSOCIATES
14-2 2008 1008 1 45 1 MEX 2012

Lot 305 + Lot 306, Victoria Park
11 Hutchinson Walk, Zealand
Project No: 10109
Sheet 10
Plan

ATTACHMENT A

VICTORIA PARK PARADE

GADIGAL AVENUE



- Legend**
- 1.0000
 - 1.0001
 - 1.0002
 - 1.0003
 - 1.0004
 - 1.0005
 - 1.0006
 - 1.0007
 - 1.0008
 - 1.0009
 - 1.0010
 - 1.0011
 - 1.0012
 - 1.0013
 - 1.0014
 - 1.0015
 - 1.0016
 - 1.0017
 - 1.0018
 - 1.0019
 - 1.0020
 - 1.0021
 - 1.0022
 - 1.0023
 - 1.0024
 - 1.0025
 - 1.0026
 - 1.0027
 - 1.0028
 - 1.0029
 - 1.0030
 - 1.0031
 - 1.0032
 - 1.0033
 - 1.0034
 - 1.0035
 - 1.0036
 - 1.0037
 - 1.0038
 - 1.0039
 - 1.0040
 - 1.0041
 - 1.0042
 - 1.0043
 - 1.0044
 - 1.0045
 - 1.0046
 - 1.0047
 - 1.0048
 - 1.0049
 - 1.0050
 - 1.0051
 - 1.0052
 - 1.0053
 - 1.0054
 - 1.0055
 - 1.0056
 - 1.0057
 - 1.0058
 - 1.0059
 - 1.0060
 - 1.0061
 - 1.0062
 - 1.0063
 - 1.0064
 - 1.0065
 - 1.0066
 - 1.0067
 - 1.0068
 - 1.0069
 - 1.0070
 - 1.0071
 - 1.0072
 - 1.0073
 - 1.0074
 - 1.0075
 - 1.0076
 - 1.0077
 - 1.0078
 - 1.0079
 - 1.0080
 - 1.0081
 - 1.0082
 - 1.0083
 - 1.0084
 - 1.0085
 - 1.0086
 - 1.0087
 - 1.0088
 - 1.0089
 - 1.0090
 - 1.0091
 - 1.0092
 - 1.0093
 - 1.0094
 - 1.0095
 - 1.0096
 - 1.0097
 - 1.0098
 - 1.0099
 - 1.0100
- Notes**
1. All dimensions are in meters unless otherwise stated.
 2. All levels are in meters above sea level unless otherwise stated.
 3. All areas are in square meters unless otherwise stated.
 4. All materials and finishes are as shown on the drawings.
 5. All work is to be completed in accordance with the specifications.
 6. All work is to be completed in accordance with the drawings.
 7. All work is to be completed in accordance with the contract documents.
 8. All work is to be completed in accordance with the relevant building codes.
 9. All work is to be completed in accordance with the relevant planning laws.
 10. All work is to be completed in accordance with the relevant environmental laws.
 11. All work is to be completed in accordance with the relevant fire safety laws.
 12. All work is to be completed in accordance with the relevant accessibility laws.
 13. All work is to be completed in accordance with the relevant energy efficiency laws.
 14. All work is to be completed in accordance with the relevant water efficiency laws.
 15. All work is to be completed in accordance with the relevant waste management laws.
 16. All work is to be completed in accordance with the relevant noise control laws.
 17. All work is to be completed in accordance with the relevant air quality laws.
 18. All work is to be completed in accordance with the relevant climate change laws.
 19. All work is to be completed in accordance with the relevant biodiversity laws.
 20. All work is to be completed in accordance with the relevant heritage laws.
 21. All work is to be completed in accordance with the relevant cultural heritage laws.
 22. All work is to be completed in accordance with the relevant indigenous heritage laws.
 23. All work is to be completed in accordance with the relevant social justice laws.
 24. All work is to be completed in accordance with the relevant human rights laws.
 25. All work is to be completed in accordance with the relevant anti-discrimination laws.
 26. All work is to be completed in accordance with the relevant equality laws.
 27. All work is to be completed in accordance with the relevant diversity laws.
 28. All work is to be completed in accordance with the relevant inclusion laws.
 29. All work is to be completed in accordance with the relevant participation laws.
 30. All work is to be completed in accordance with the relevant transparency laws.
 31. All work is to be completed in accordance with the relevant accountability laws.
 32. All work is to be completed in accordance with the relevant integrity laws.
 33. All work is to be completed in accordance with the relevant honesty laws.
 34. All work is to be completed in accordance with the relevant fairness laws.
 35. All work is to be completed in accordance with the relevant justice laws.
 36. All work is to be completed in accordance with the relevant equity laws.
 37. All work is to be completed in accordance with the relevant respect laws.
 38. All work is to be completed in accordance with the relevant dignity laws.
 39. All work is to be completed in accordance with the relevant autonomy laws.
 40. All work is to be completed in accordance with the relevant privacy laws.
 41. All work is to be completed in accordance with the relevant security laws.
 42. All work is to be completed in accordance with the relevant safety laws.
 43. All work is to be completed in accordance with the relevant health laws.
 44. All work is to be completed in accordance with the relevant welfare laws.
 45. All work is to be completed in accordance with the relevant well-being laws.
 46. All work is to be completed in accordance with the relevant quality of life laws.
 47. All work is to be completed in accordance with the relevant happiness laws.
 48. All work is to be completed in accordance with the relevant fulfillment laws.
 49. All work is to be completed in accordance with the relevant meaning laws.
 50. All work is to be completed in accordance with the relevant purpose laws.
 51. All work is to be completed in accordance with the relevant passion laws.
 52. All work is to be completed in accordance with the relevant joy laws.
 53. All work is to be completed in accordance with the relevant love laws.
 54. All work is to be completed in accordance with the relevant compassion laws.
 55. All work is to be completed in accordance with the relevant kindness laws.
 56. All work is to be completed in accordance with the relevant generosity laws.
 57. All work is to be completed in accordance with the relevant gratitude laws.
 58. All work is to be completed in accordance with the relevant humility laws.
 59. All work is to be completed in accordance with the relevant patience laws.
 60. All work is to be completed in accordance with the relevant gentleness laws.
 61. All work is to be completed in accordance with the relevant self-control laws.
 62. All work is to be completed in accordance with the relevant temperance laws.
 63. All work is to be completed in accordance with the relevant moderation laws.
 64. All work is to be completed in accordance with the relevant balance laws.
 65. All work is to be completed in accordance with the relevant harmony laws.
 66. All work is to be completed in accordance with the relevant peace laws.
 67. All work is to be completed in accordance with the relevant calmness laws.
 68. All work is to be completed in accordance with the relevant serenity laws.
 69. All work is to be completed in accordance with the relevant tranquility laws.
 70. All work is to be completed in accordance with the relevant stillness laws.
 71. All work is to be completed in accordance with the relevant quietness laws.
 72. All work is to be completed in accordance with the relevant silence laws.
 73. All work is to be completed in accordance with the relevant solitude laws.
 74. All work is to be completed in accordance with the relevant aloneness laws.
 75. All work is to be completed in accordance with the relevant isolation laws.
 76. All work is to be completed in accordance with the relevant seclusion laws.
 77. All work is to be completed in accordance with the relevant privacy laws.
 78. All work is to be completed in accordance with the relevant confidentiality laws.
 79. All work is to be completed in accordance with the relevant discretion laws.
 80. All work is to be completed in accordance with the relevant tact laws.
 81. All work is to be completed in accordance with the relevant diplomacy laws.
 82. All work is to be completed in accordance with the relevant negotiation laws.
 83. All work is to be completed in accordance with the relevant mediation laws.
 84. All work is to be completed in accordance with the relevant arbitration laws.
 85. All work is to be completed in accordance with the relevant conflict resolution laws.
 86. All work is to be completed in accordance with the relevant dispute resolution laws.
 87. All work is to be completed in accordance with the relevant problem-solving laws.
 88. All work is to be completed in accordance with the relevant decision-making laws.
 89. All work is to be completed in accordance with the relevant leadership laws.
 90. All work is to be completed in accordance with the relevant management laws.
 91. All work is to be completed in accordance with the relevant organization laws.
 92. All work is to be completed in accordance with the relevant administration laws.
 93. All work is to be completed in accordance with the relevant operations laws.
 94. All work is to be completed in accordance with the relevant logistics laws.
 95. All work is to be completed in accordance with the relevant supply chain laws.
 96. All work is to be completed in accordance with the relevant procurement laws.
 97. All work is to be completed in accordance with the relevant contract management laws.
 98. All work is to be completed in accordance with the relevant risk management laws.
 99. All work is to be completed in accordance with the relevant compliance laws.
 100. All work is to be completed in accordance with the relevant governance laws.

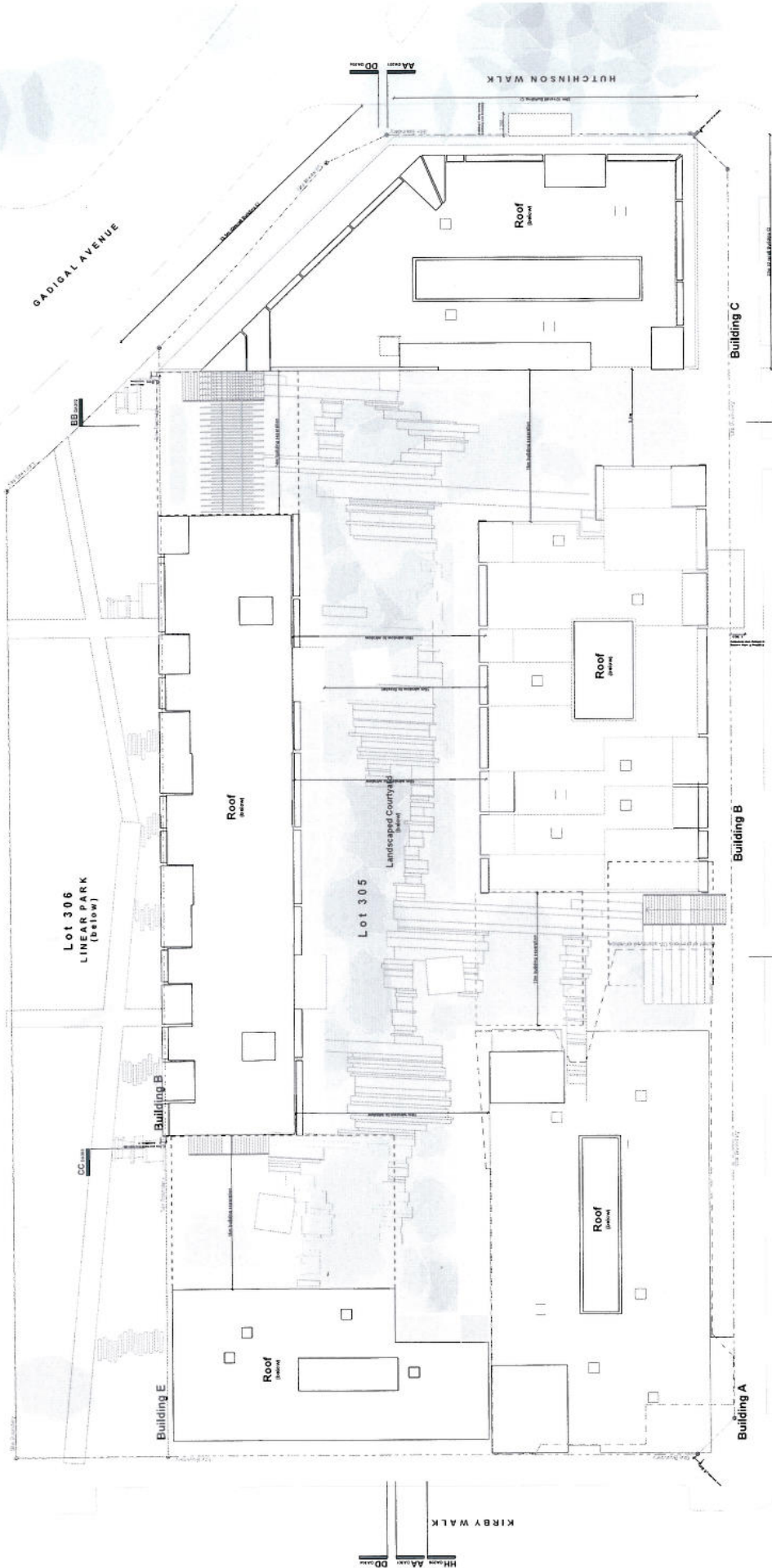
PROJECT: Lot 305 + Lot 306, Victoria Park
 1 HUTCHINSON WALK, GADIGAL
 Level 1/142
 Files

DATE: 14/02/2017
 TIME: 10:19 AM
 DRAWING: DAM12
 SHEET: 1/1
 PROJECT: G

TURNER + ASSOCIATES
 15-17 CECIL STREET, SYDNEY NSW 2010 AUSTRALIA
 T +61 2 9554 8000 F +61 2 9554 0088

ATTACHMENT A

VICTORIA PARK PARADE



- Legend**
- Notes Legend**
- Materials & Finishes Legend**

Scale: 1:1000
Date: 14/03/2012
Author: [Name]
Check: [Name]

Lot 305 + Lot 306, Victoria Park
Hutchinson Walk, Zealand
Roof Plan S10 Plan
Phase

TURNER + ASSOCIATES
1-412 804 800 | 1-412 3 885 008